

This is the calendar of Integrated Child Centre De Eglantier (IKC), from here on mentioned as IKC or IKC De Eglantier.

Together with the IKC guide (part A), the calendar (part B) contains all the information about the IKC. In the calendar, you will find a detailed description of the services that the IKC offers you and your child (ren): education and childcare from 0 to 12 years. Children, teachers, teaching staff and parents/caregivers all learn and work together at the IKC.

In this IKC calendar, you will find practical information from IKC De Eglantier and what you can expect from us as IKC. For example: how we deal with special leave, trips and all important dates.

Where it says 'parent(s)', you may also read caregiver(s).

We hope you enjoy reading and using this IKC calendar.

## The IKC Eglantier in short

IKC Eglantier is a cooperation between Stichting Librijn Openbaar Onderwijs (Public Education Foundation) and Kinderopvang Morgen.

Librijn is responsible for the public primary schools in Delft and Rijswijk.

Kinderopvang Morgen is available for children between 6 weeks to 12 years at many locations in Rijswijk, The Hague, het Westland, and Delft. IKC De Eglantier provides a playgroup, a day care centre, pre-school care, lunch break care, and after-school care (including holidays), as well as primary education.

At IKC De Eglantier, we work based on a jointly supported pedagogical and educational vision performed by one team. We do this together for the benefit of all the children.

Professionals and parents work together in the IKC to give support tailored to the development of the children. Parents and children are allowed to make their own choices from the services offered at the IKC Eglantier. This makes it easier for parents to combine work and care between 7:30 to 18:30.

We strive for the optimal upbringing and inclusive education for each child. We do this by providing a cohesive curriculum of continuous developmental trajectories for children from 0 to 12 years based on the International Primary Curriculum (IPC) and Bilingual Primary Education (TPO). At the childcare, we work with the program Early Bird, which introduces the children to English in a playful manner.

The International Primary Curriculum is an integrated, thematic, and creative curriculum for children aged 4 to 12 years, focusing on creative and social studies subjects. The IPC is composed in such a way that it provides insight and improves learning.

The IKC de Eglantier participated in a pilot of the Ministry of Education in 2015, which means that all groups receive education in the English language for approximately 30% of the time. The pilot ended in May 2023. All participating schools are allowed to continue their bilingual curriculum, pending the expansion of the legislation.

# VISION



Integrated Children's Centre (IKC) De Eglantier is the place for education, childcare and development of children aged 0 to 12. In IKC De Eglantier, we work together on an integrated range with a strong focus on continuous development lines and shared responsibility for learning and education.

Action-oriented, cooperative, playful and goal-oriented learning to meet (individual) learning needs are central to our educational range.

### We pay attention to ourselves and others

From a safe pedagogical climate, we offer children personal and social skills to develop as global citizens.

### We pay attention to a solid basis

We offer children a solid basis to independently take their place in the world. We do this by working on (individual) educational needs in an action-oriented manner. A solid basis in maths, language, reading (comprehension), spelling and (fine and gross) motor skills is the basis for further development.

### We pay attention to the world

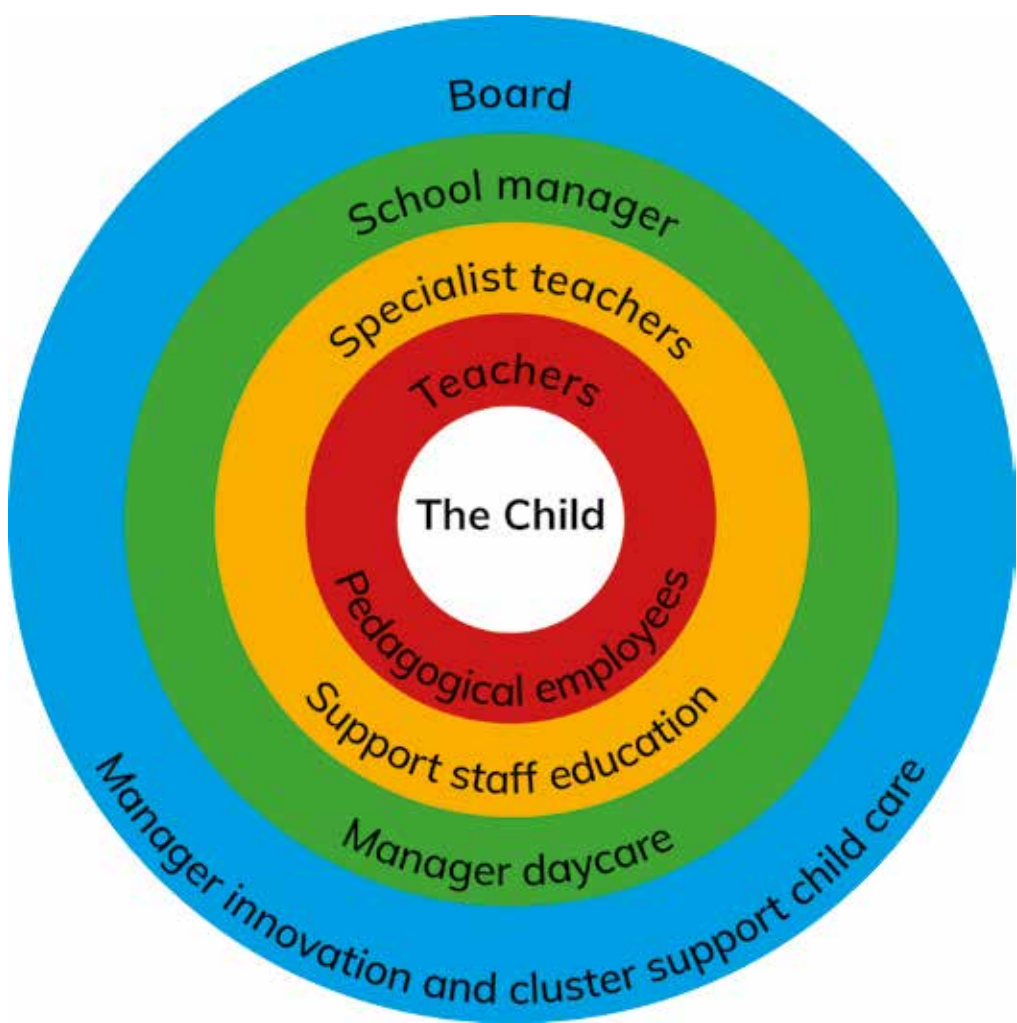
We emphasise world citizenship by working with the International Primary Curriculum (IPC) in addition to a solid foundation and offer all children extra English, music and nature education.

To teach children to take ownership of their learning, each child works in collaboration with teacher and parent(s) to develop a personal portfolio. We also go out into the world and undertake educational trips.

# WE GO OUT INTO THE WORLD!

Organisation chart

Our IKC focuses on the child, which can be seen in our organisation circle below:



IKC-employees

School manager	Yvonne den Haan	Mon   Tue   Wed   Thu   Fri	
Manager daycare	vacancy	Mon   Tue   Thu   Fri	
Leerkrachten			
Groep A	Miss Sandra van Karsen		Wed   Thu   Fri
Groep B	Miss Errika Sarantopoulou	Mon   Tue   Wed	
Groep C	Miss Corine Dijkshoorn	Mon   Tue   Wed	
Groep D	Miss Linde Ras	Mon   Tue   Wed	
Groep 3	Miss Els Harpman	Mon   Tue   Wed	Fri
Groep 3/4	Miss Denise Komen		Wed   Thu   Fri
Groep 4	Miss Sophie Heijkoop	Mon   Tue   Wed   Thu   Fri	
Groep 5	Miss Bianca Gerritse	Mon   Tue   Wed   Thu   Fri	
Groep 5/6	Miss Anne Laarakker	Mon   Tue   Wed   Thu   Fri	
Groep 6	Mr Jurgen v/d Eng	Mon   Tue   Wed   Thu   Fri	
Groep 7	Miss Leanne van Tol	Mon   Tue   Wed   Fri	
Groep 7/8	Mr Ard Groeneveld	Mon   Tue   Wed   Thu   Fri	
Groep 8	Miss Naomi van der Vlugt	Mon   Tue   Wed   Thu   Fri	
Specialist teachers			
Internal guidance counsellor	Miss Daniëlle Kunz	Mon   Tue   Wed   Thu   Fri	T 015 2564208
Education specialist	Miss Paula Dinger		Wed   Thu   Fri
Contact person safe school	Miss Sandra van Karsen		Tue   Wed   Thu   Fri
Contact person Focus education	Miss Daniëlle Kunz	Mon   Tue   Wed   Thu   Fri	T 015 2564208
Confidential counsellor daycare	Judith van der Kraan		T 06 29409668
Coordinator English	Miss Marly de Geus	Mon   Tue   Wed   Thu   Fri	
Specialist teacher English	Miss Caitlin Alderdice		Wed   Thu   Fri
Specialist teacher English	Miss Kseniya Shkumat		Tue   Wed   Fri
Specialist teacher English	Miss Roos de Haze		Tue   Wed   Thu   Fri
ICT coordinator	Miss Sandra van Karsen		
Language coordinator	Miss Anne Laarakker		
Math coordinator	Mr Ard Groeneveld		
IPC coordinators	Miss Denise Komen & Miss Naomi van der Vlugt		
Physical Education	Miss Michaela Brachalal	Mon   Tue   Wed   Fri	
Music teacher	Miss Isabel Belmejo		
Coordinator upper groups	Mr Ard Groeneveld		
Coordinator lower groups	Miss Marly de Geus		
Support staff education			
Concierge/ Administration	Miss Roshnie Bachoe	Mon   Tue   Wed   Thu   Fri	
Philosophy teacher	Miss Djoeke Hooimeijer		Fri
Teacher assistant	Miss Evelien de Fijter	Mon   Tue   Wed   Thu   Fri	
Education assistant	Miss Rahieda Hossainkhan	Mon   Tue   Fri	
Education assistant	Miss Myra Chedi		Wed   Thu   Fri
Education assistant	Miss Petra van Leeuwen	Mon   Tue   Thu   Fri	
Education assistant	Miss Annette Peterse	Mon   Tue   Thu   Fri	
Liaison Officer	Adyam Taglesi	Mon   Wed   Fri	
Pedagogical employees childcare			
Childcare 0 to 4 years	Astrid Koestal, Carmen Bollen, Insos Manggaprow		
Pre-school care 2 to 4 years	Daan Korstanje, Fatma Kucukkalay, Joyce Schrik		
After school care domain 4 to 7 years	Daan Korstanje, vacancy		
After school care domain 8 to 12 years	Fatma Kucukkalay, Joyce Schrik, vacancy		
Pedagogical coach	vacancy		
Tutor	vacancy		
Volunteers			
Many volunteers work at IKC De Eglantier, including interns, reading coaches, staff members in between-school care, the gardeners, handyman, and parents for various tasks.			



# AUGUST 2025



Monday	Tuesdag	Wednesday	Thursdag	Friday	weekend
18	19	20	21	22	23
Summer holidays Childcare centre OPEN	Summer holidays Childcare centre OPEN	Summer holidays Childcare centre OPEN	Summer holidays Childcare centre OPEN	Summer holidays Childcare centre OPEN	
					24
34					
25	26	27	28	29	30
Summer holidays Childcare centre OPEN	Summer holidays Childcare centre OPEN	Summer holidays Childcare centre OPEN	Summer holidays Childcare centre OPEN	Summer holidays Childcare centre OPEN	
				Lost day of the holiday	31
35					

## Daily activities

The IKC is open from 7.30 a.m. to 6.30 p.m. Parent(s) may enter the day care centre and nursery school to say goodbye to their child.

In groups 1 to 8 of the school, we expect parents to say goodbye to their child outside before 8.30 a.m. This promotes the independence of the child and ensures a quiet start to the lessons. At 8.30 the lessons start, and we expect the children to be in the classroom.

In the morning, short messages can be passed on to the staff members. There is no opportunity for longer conversations, although an appointment can be made through the communication apps for a conversation at a later time.

When the bell rings to go home at 12 noon and 3 p.m., the children come outside by themselves or with the teacher. The children who go to the after-school care are picked up after school to go to the day care. The teachers of groups 1 and 2 see to it that the children are picked up.

When a child is picked up by someone other than the parents, please notify the teacher or pedagogical staff about this.

### SCHOOLTIME EDUCATION

Monday, Tuesday,  
Thursday, Friday

8.30 - 12.00  
13.00 - 15.00

Wednesday

8.30 - 12.00

### OPENING HOURS

**DAYCARE CENTRE**  
daily

7.30 - 18.30

**PLAYGROUP**  
Monday, Tuesday,  
Thursday, Friday

8.15 - 12.15

**PRE-SCHOOL CARE**  
Monday, Tuesday,  
Thursday, Friday

7.30 - 8.30

**AFTER-SCHOOL CARE**  
Monday, Tuesday,  
Thursday, Friday

15.00 - 18.30

Wednesday

12.00 - 18.30

holidays and  
schoolfree days:

7.30 - 18.30

**CALL IN SICK  
EDUCATION**  
8.00 - 8.30 uur **via app**

**IB-BUILDING/LUNCH BREAK**  
⬆ 015 256 42 08  
forwarding number 1

**RH-BUILDING**  
⬆ 015 256 42 08  
forwarding number 2

**CALL IN SICK  
DAYCARE CENTRE**  
**via app**

## Attendance

### Call in sick

If your child is unexpectedly unable to come to the IKC due to illness or family circumstances, please inform us before 8:15 a.m. via the communication app. This app is also available for the childcare, KDV Morgen, to notify the staff of your child's absence.

### Absence

If your child is absent at our IKC without notice, we will contact you around 9 a.m. Your child's absence is carefully registered with the reason for the absence. The teacher will talk to you if your child is regularly late or absent. Agreements are made in this conversation. If the situation does not improve after discussions with the teacher, the IKC will report this to the attendance officer.

Children of primary school age are subject to compulsory education, which is why different measures apply in case of systematic failure to attend school on time, and absences.

Children from the age of four attend primary school. During the first year, your child is not yet subject to compulsory school attendance and you may, in consultation with the teacher, keep your child at home for an occasional afternoon if school is still too exhausting. From the age of five, all children are subject to compulsory education and must attend school every day.

### Leave of absence

You can request a leave day for a child in case of serious circumstances, such as a move, religious holidays, a marriage of a family member, or an anniversary. In our communication app, you can request leave of absence. An application must be submitted to the school principal at least one month before the desired leave.

## Join in the discussion and help

### Parental involvement

When parents and IKC team work well together, children will feel more comfortable at school and day care.

Parent(s), teachers, and pedagogical staff are expected to act in the child's best interest. Together we feel responsible for the development of children. Good collaboration is important in this. To ensure this, we make our IKC as accessible as possible for you. The basis for good communication between the various parties is trust, mutual understanding and respect. Sometimes it is necessary to maintain more regular contact between IKC and parents/guardians. This can promote the development of children. It may also be required to practise (extra) teaching material with your child.

We also expect a contribution from the parent(s) to your child's development. Every parent who registers their child thereby enters into a partnership between parents and the school. Together, we are responsible for the child's development. It may be a pleasant experience to talk with other parents about school business, things you notice in your child's development, or chat with other parents. Once a month, you will get the chance to do just that during a 'coffee morning'.

We assume that you are present at moments when your child's development is discussed such as the contact evenings, information evenings, and the portfolio interviews. An information evening will take place at the start of the new school year. Parent evenings on specific topics are also organised. During portfolio discussions, you will discuss the portfolios with your child.

We organise many activities for the children to be involved with skills and acquire knowledge in different ways. We regularly need the help of parent(s) for example, assistance with activities in the classroom, trips, traffic lessons, sports tournaments and the annual sports day.

# SEPTEMBER 2025



Monday	Tuesdag	Wednesday	Thursdag	Friday	weekend
1	2	3	4	5	6
IPC EY (gr. 1-2) How we lay IPC MP1 (gr. 3) The new group IPC MP1 (gr. 4) How Do We Learn? IPC MP2 (gr. 5/6) How do we learn? IPC MP3 (gr 7) Pioneers of change IPC MP3 (gr 8) What if it happened to you?? No PE class	No PE class IPC MP3 How do we learn	Head Lice check No PE class	School library is open again	Newsletter 1 RH Evacuation exercise	
					7
36					
8	9	10	11	12	13
Group 3 to 6 Judo classes IB Evacuation exercise	Group 3 to 6 Judo classes 13.00 - 14.00 RH-TSO meeting 20.00 OR meeting 19.00 - 21.00 EY and MP1 Information evening	Choosing JMR	Group 7 School garden 13.00 - 14.00 IB-TSO meeting 19.00 - 21.00 MP2 and MP3 Information evening		
					14
37					
15	16	17	18	19	20
Group 3 to 6 Judo classes First JMR meeting 15.00 - 17.00 Group A through 8 Parents teacher meeting	Group 3 to 6 Judo classes 12.00 - 13.00 TSO IB Evacuation exercise 15.00 - 17.00 Group A through 8 Parents teacher meeting  Prinsjesdag	12.00 - 17.00 Group A through 8 Parents teacher meeting	12.00 - 13.00 TSO RH Evacuation exercise 15.00 - 21.00 Group A through 8 Parents teacher meeting  Day of the pedagogical employee	15.00 - 17.00 Group A through 8 Parents teacher meeting	
					21
38					
22	23	24	25	26	27
Group 8 Workweek IPC MP1 (gr. 4) We are what we eat IPC MP2 (gr. 5/6) Chocolate OC meeting	Group 8 Workweek GMR meeting	Group 8 Workweek	Group 8 Workweek	Group 8 Free Newsletter 2   European Day of Languages	
					28
39					
29	30	NOTES	NOTES	NOTES	
IPC MP1 (gr 3) Forest hut	19.30 - 21.30 MR meeting				
40					

### SCHOOLTIME EDUCATION

Monday, Tuesday, Thursday, Friday  
8.30 - 12.00  
13.00 - 15.00  
Wednesday  
8.30 - 12.00

### OPENING HOURS

DAYCARE CENTRE daily  
7.30 - 18.30  
PLAYGROUP  
Monday, Tuesday, Thursday, Friday  
8.15 - 12.15  
PRE-SCHOOL CARE (VSO)  
Monday, Tuesday, Thursday, Friday  
7.30 - 8.30  
AFTER-SCHOOL CARE (BSO)  
Monday, Tuesday, Thursday, Friday  
15.00 - 18.30  
Wednesday  
12.00 - 18.30  
holidays and schoolfree days:  
7.30 - 18.30

### Employee participation council (M.R.)

The MR represents the staff, parents and children of the IKC and has the task of advising the Board of Education, to agree and contribute to the policy of education. This school year, the M.R. consists of the following members:  
Parent delegate  
Derk, parent of Saar (gr 8) and Fleur (gr 5/6) Chairman  
Ronald, parent of Nikki (gr 8) and Milou (gr 5/6)  
Job, parent of Jochem (gr 6)  
Staff delegate  
Theodora Papachristou (gr C))  
Anne Laarakker (gr 5/6)  
Annette Peterse (ESS)  
You can contact the M.R. at: mr@eglantierdelft.nl

### Joint Participation Council

The GMR represents the staff, parents and children of all schools within the organisation and has an important role to think with the school board about policies for the school organisation. Ronald, parent of Daan (gr 5/6) represent our school.

### Junior participation council (JMR)

From grades 5 to 8, two class representatives are chosen for the JMR. The JMR deals with improvements and wishes from the children of the IKC. Think of play oppor-

tunities, after-school activities, books etc. The delegates meet regularly. They discuss the agenda items with their classmates and are fed with information by them.

### Parent Council (OR)

This school year, the Parents Council consists of the following members:  
Patricia, parent of Kaitlyn (gr 8) Avery (gr 6) Chairman  
Kyra, parent of Safae (gr. 3/4) Treasurer  
Dianne, parent of Finlay (gr.5) Magnus (gr B) Secretary  
Patrick, parent of Lotte (gr 8)  
Renske, parent of Julius (gr 6) Eleanor (gr 4) Remus (gr A)  
Naomi, parent of Amy (gr.3)  
Annemiek, parent of Stef (gr 5/6) en Kiki (gr 3/4)  
Mandy, parent of Yessi (gr 5/6) en Katey (gr B)  
Evelien de Fijter (ESS) Staff representative  
Bianca Gerritse (gr 5) Staff representative  
You can contact the OR at: or@eglantierdelft.nl

### Parents committee (O.C.)

The parents' committee represents the parents and children of childcare at IKC De Eglantier and is tasked with maintaining and improving the quality of childcare in cooperation with the childcare centre. This school year, the O.C. is formed by: Renske van Asten and Brigitte de Haas. Are you interested, and do you want to help think about



IB-BUILDING T 015 256 42 08 RH-BUILDING T 015 256 42 08  
LUNCH BREAK T 015 256 42 08  
BSO IB T 06 294 09 623  
PLAYGROUP T 06 153 51 196  
VSO / BSO RH T 06 153 51 196  
DAYCARE CENTRE T 06 580 23 065



# OCTOBER 2025



Monday	Tuesday	Wednesday	Thursdag	Friday	weekend
NOTES	NOTES	1	2	3	4
		08.30-09.30 Coffee morning RH917  Start of Children's Book Week. Theme: "Full of adventure"	Group 7 Field football tournament		
					5
					Teacher's day
40					
6	7	8	9	10	11
Study day Childcare centre OPEN	20.00 OR meeting	09.30 - 11.00 Open Morning IKC  Group 8 Movie time workweek	Group 8 Field football tournament		End of Children's Book Week
					12
41					
13	14	15	16	17	18
Second JMR meeting		MP2 School play Groep 7 Two-day trip	Groep 7 Two-day trip	Newsletter 3	
					19
42					
20	21	22	23	24	25
Autumn break Childcare centre OPEN	Autumn break Childcare centre OPEN	Autumn break Childcare centre OPEN	Autumn break Childcare centre OPEN	Autumn break Childcare centre OPEN	
					26
					Wintertime
43					
27	28	29	30	31	
IPC EY Time for a party IPC MP1 Food truck IPC MP1 We are what we eat IPC MP2 Fashion IPC MP3 (gr 7) Feelings IPC MP3 (gr 8) Growing up		Head Lice check			
44					

### SCHOOLTIME EDUCATION

Monday, Tuesday,  
Thursday, Friday

8.30 - 12.00  
13.00 - 15.00

Wednesday

8.30 - 12.00

### OPENING HOURS

DAYCARE CENTRE  
daily

7.30 - 18.30

PLAYGROUP

Monday, Tuesday,  
Thursday, Friday

8.15 - 12.15

PRE-SCHOOL CARE (VSO)

Monday, Tuesday,  
Thursday, Friday

7.30 - 8.30

AFTER-SCHOOL CARE (BSO)

Monday, Tuesday,  
Thursday, Friday

15.00 - 18.30

Wednesday

12.00 - 18.30

holidays and  
schoolfree days:

7.30 - 18.30

all things related to childcare? You can register with  
oceglantier@kinderopvangmorgen.nl

### Friends of De Eglantier Foundation

The IKC accepts gifts from companies if they are intended  
for activities other than regular education and if its activi-  
ties do not conflict with our objectives. The participation  
council monitors the implementation of this policy.

Parents and teachers founded Stichting Vrienden van  
De Eglantier Voorhof to support De Eglantier in realising  
projects that cannot be (fully) realised from the normal  
budget but are considered of great importance for cul-  
tural and nature education at the school. In school year  
2024-2025, for example, donations paid for costumes for  
the Sinterklaas party, storybags for MP1 and materials  
for motor development.

If you would like to make a donation, please make  
out your contributions to: NL92 RABO 0300 5837 45 to  
Stichting Vrienden van De Eglantier.

If you would like to contribute to the spending or have  
any questions, please contact the board of education.

### Parent contribution education

The school asks for a voluntary financial contribution for  
extra facilities and activities in addition to the curriculum.

For the education of IKC De Eglantier, a part of the money  
is spent on trips, TPO and IPC activities.

The parental contribution is also used for:

- Annually/bi-annually, all children go on an educational  
outing by coach;
- Food and drinks and renting the sports field for the  
sports day;
- The rent of the school gardens for group 6;
- The decoration of parties such as the Sinterklaas  
celebration and Christmas party;
- The compensation for the photographer who photo-  
graphs and films the children during various activities like  
the yearly schoolplay;
- Educational trips.

If parents cannot pay the voluntary contribution, they can  
apply for the Delft Pass. When parents are unwilling or  
unable to pay the voluntary contributions, children may  
still participate in activities.

For all groups the parent contribution is € 66 per year.  
You can pay via Stichting ouderraad De Eglantier,  
NL65 INGB 0001673458.

### Childcare costs

Childcare (daycare, toddler care and pre-school and  
after-school care) falls under the Childcare Act. As a  
parent, you enter into a contract with Kinderopvang



IB-BUILDING T 015 256 42 08 LUNCH BREAK T 015 256 42 08 BSO IB T 06 294 09 623 PLAYGROUP T 06 153 51 196 VSO / BSO RH T 06 153 51 196 DAYCARE CENTRE T 06 580 23 065 RH-BUILDING T 015 256 42 08

# NOVEMBER 2025



Monday	Tuesday	Wednesday	Thursday	Friday	weekend
NOTES	NOTES	NOTES	NOTES	NOTES	1
					2
44	3	4	5	6	7
Group 3 through 8 Open PE class  Groep 5 through 8 Draw lots	Group 3 through 8 Open PE class  20.00 OR meeting	19.30-20.30 Coffee evening IB		Newsletter 4  School photographer     Start media literacy week	8
					9
45	10	11	12	13	14
Start Sinterklaas news bulletin	Group 8 Parents meeting 19.30 - 21.30 MR meeting	Parents meeting media literacy week			15
					Sinterklaas in Nederland
					16
46	17	18	19	20	21
OC meeting			Groep 7 and 8 Indoor football	Study day Childcare centre OPEN	Sinterklaas in Delft
					23
47	24	25	26	27	28
IPC MP1 Festive season Sint and Christmas IPC MP3 Making new materials	GMR meeting			Newsletter 5	29
					30
48					

### SCHOOLTIME EDUCATION

Monday, Tuesday,  
Thursday, Friday

8.30 - 12.00  
13.00 - 15.00

Wednesday

8.30 - 12.00

### OPENING HOURS

DAYCARE CENTRE

daily

7.30 - 18.30

PLAYGROUP

Monday, Tuesday,  
Thursday, Friday

8.15 - 12.15

PRE-SCHOOL CARE (VSO)

Monday, Tuesday,  
Thursday, Friday

7.30 - 8.30

AFTER-SCHOOL CARE (BSO)

Monday, Tuesday,  
Thursday, Friday

15.00 - 18.30

Wednesday

12.00 - 18.30

holidays and  
schoolfree days:

7.30 - 18.30

Morgen for childcare. Working parents are often entitled to childcare allowance and pay an income-related parent's contribution. The rates can be found on the website: [www.eglantierdelft.nl/ouders/ouderbijdrage](http://www.eglantierdelft.nl/ouders/ouderbijdrage)

### Delftpas

The Delftpas can be applied for by everyone, even if you do not live in Delft. Delftpas is valid from 1 March 2025 through 28 February 2026. With the Delftpas, you can experience fun activities in Delft and the region, go to the movies or a museum for free. If you have a low

income, you can also get a subsidy for school materials and parental contribution with the Delftpas. Go to [www.delft.nl/delftpas](http://www.delft.nl/delftpas).

Parents with a low-income can also use the Delftpas to pay (part of) the costs of sports and culture. The Jeugdsportfonds (€ 325) and the Jeugdcultuurfonds (€ 450) provide a contribution to the costs of sport and culture. You can apply for this contribution separately or both through the school management.

For more information, please visit: [www.jeugdsportfonds.nl](http://www.jeugdsportfonds.nl) of [www.jeugdcultuurfonds.nl](http://www.jeugdcultuurfonds.nl).

### IKC Practical information from A to Z

#### After school activities

The children are given the opportunity to participate in various after-school activities. Various courses are offered in the field of music, technology and culture. For example, a typing course, learn to play the guitar, or yoga lessons. You will receive more information about this, and you can register your child during the school year. For the after-school activities, external people are hired by the IKC. The activities are the responsibility of the IKC.

### Bicycles

Grades 5 and up regularly go on the road with their bicycles under the supervision of the teacher and parent(s), for example, for an outing, school garden or traffic lessons.

The bicycle must, of course, be technically sound. Cycling is not allowed on the playground. At the beginning of the school year, the classes discuss which children may or may not come to school by bicycle daily. There is only limited space for the IKC to store bicycles. That is why only children who live more than fifteen



IB-BUILDING  
T 015 256 42 08  
RH-BUILDING  
T 015 256 42 08

LUNCH BREAK  
T 015 256 42 08

BSO IB  
T 06 294 09 623

PLAYGROUP  
T 06 153 51 196

VSO / BSO RH  
T 06 153 51 196

DAYCARE CENTRE  
T 06 580 23 065

# DECEMBER 2025



Monday	Tuesdag	Wednesday	Thursdag	Friday	weekend
1	2	3	4	5	6
Third JMR meeting	Gr 5 through gr 8 St Nicholas surprises handed in	Gr 5 through gr 8 St Nicholas surprises presentation	Gr 5 through gr 8 St Nicholas surprises presentation	St Nicholas party	
				Half day Childcare centre OPEN	7
49					
8	9	10	11	12	13
				Newsletter 6	
					14
50					
15	16	17	18	19	20
			Christmas diner		
			Half day Childcare centre OPEN		21
51					
22	23	24	25	26	27
Christmas break Childcare centre OPEN	Christmas break Childcare centre OPEN	Christmas break Childcare centre OPEN	Christmas day Christmas break Childcare centre CLOSED	Boxing day Christmas break Childcare centre CLOSED	
					28
52					
29	30	31	NOTES	NOTES	
Christmas break Childcare centre OPEN	Christmas break Childcare centre OPEN	New Year's Eve Christmas break Childcare centre OPEN			
01					

SCHOOLTIME EDUCATION

Monday, Tuesday,  
Thursday, Friday  
8.30 - 12.00  
13.00 - 15.00  
Wednesday  
8.30 - 12.00

OPENING HOURS

DAYCARE CENTRE  
daily  
7.30 - 18.30  
PLAYGROUP  
Monday, Tuesday,  
Thursday, Friday  
8.15 - 12.15  
PRE-SCHOOL CARE (VSO)  
Monday, Tuesday,  
Thursday, Friday  
7.30 - 8.30  
AFTER-SCHOOL CARE (BSO)  
Monday, Tuesday,  
Thursday, Friday  
15.00 - 18.30  
Wednesday  
12.00 - 18.30  
holidays and  
schoolfree days:  
7.30 - 18.30

minutes' walk from school can come by bike or when a trip by bike is planned.  
If your child does come to school by bicycle, we ask you to put it in the appropriate racks. Make sure that the bike is locked. The IKC is not liable for damage or theft.

Communication

Letters, newsletters, films or photo albums from our in-house photographer of activities are sent digitally as much as possible via our communication apps. For the school we use Social School and for the child care we use the Konnect app. In Social Schools, you'll find the agenda with the activities.  
It is, therefore, important that the IKC is aware of your most recent details. Changes to your information can be sent to: admin@eglantierdelft.nl and/or plaatsingen@kinderopvangmorgen.nl

Drop off and pick up (school run)

The safety of the children is paramount. That is why we ask you to bring your child by car only in emergencies. If this is not possible, we request that you park your car in the designated parking spaces in such a way that the other traffic is not obstructed and the safety is not endangered. The police are notified of violations of the parking bans. The IKC regularly ask the police to supervise.

For the safety of the children, there is a drive-in ban at the Ina Boudier-Bakkerstraat between 8.15-8.45 and 14.45- 15.15. At the Roland Holstlaan, we ask you not to stop in front of the R.H. building. There are enough parking spaces on the Roland Holstlaan and the Jan Campertlaan.

Educational trips

We try to make an educational trip with most IPC themes. This is made known to parent(s) in advance via the communication app.  
In the school year 2025-2026, we organise a trip by bus for all the groups. In addition, we regularly call in the help of parents for trips. Parents who transport children by car must have passenger insurance and seat belts, also in the rear. Children up to 1.35 m should preferably be transported in an approved child seat. The law makes exceptions for occasional transport by others other than the parents. However, children up to 1.35 m must not be transported in the front seat without an approved child seat. We thereby adhere to the guidelines for safe transportation. In transport by other parents, we ask you to give your child a car seat or booster seat (if present) for use during transport during the trip. Many trips can only take place with the help of parent(s). Please try to free up time for this. The childcare has a protocol for outings. You can ask the pedagogical staff what that entails.



IB-BUILDING      LUNCH BREAK      BSO IB      PLAYGROUP      VSO / BSO RH      DAYCARE CENTRE  
T 015 256 42 08    T 015 256 42 08    T 06 294 09 623    T 06 153 51 196    T 06 153 51 196    T 06 580 23 065  
RH-BUILDING  
T 015 256 42 08

# JANUARY 2026



Monday	Tuesday	Wednesday	Thursdag	Friday	weekend
NOTES	NOTES	NOTES	1	2	3
			New Year's Day Christmas break Childcare centre CLOSED	Christmas break Childcare centre OPEN	
					4
01					
5	6	7	8	9	10
IPC EY What do you wear? IPC MP1 From head to toe IPC MP2 The active planet IPC MP3 The Netherlands becomes the Netherlands		Head Lice check 08.30-09.30 Coffee morning RH			
					11
02					
12	13	14	15	16	17
Cito test week 1 OC meeting	20.00 OR meeting 19.30 MR meeting			Newsletter 7	
					18
03					
19	20	21	22	23	24
Cito test week 2					
					25
04					
26	27	28	29	30	31
Fourth JMR meeting Group 8 Secondary school information evening	Group 8 Secondary school information evening	09.30 - 11.00 Open Morning IKC			Day of the principal
			Start of Poetry Week		
05					

### SCHOOLTIME EDUCATION

Monday, Tuesday,  
Thursday, Friday  
8.30 - 12.00  
13.00 - 15.00  
Wednesday  
8.30 - 12.00

### OPENING HOURS

DAYCARE CENTRE  
daily  
7.30 - 18.30  
PLAYGROUP  
Monday, Tuesday,  
Thursday, Friday  
8.15 - 12.15  
PRE-SCHOOL CARE (VSO)  
Monday, Tuesday,  
Thursday, Friday  
7.30 - 8.30  
AFTER-SCHOOL CARE (BSO)  
Monday, Tuesday,  
Thursday, Friday  
15.00 - 18.30  
Wednesday  
12.00 - 18.30  
holidays and  
schoolfree days:  
7.30 - 18.30

### First aid

Should your child be involved in an accident at school, then the procedure is as follows:

- 1 Minor injuries are treated by one of the teachers or pedagogical staff. Several teachers have a first-aid certificate (BHV) and will assist if necessary;
- 2 The school will give first aid in case of severe injuries and will immediately phone the parents;
- 3 If you are available, you can take your child to the Emergency Department;
- 4 If you are not available, we will contact the G.P. surgery;
- 5 In severe cases, we immediately call the emergency services and parents;
- 6 We register all accidents.

### Healthy eating | timebreak | treats

At IKC, we encourage healthy eating. During the break (around 10 o'clock), we aim to ensure that children eat and drink healthily. We have 'Gruit'-days at school five days a week. This means that only fruit and vegetables are eaten during the small break.

At lunchtime (around 12 noon), children enjoy a packed lunch. We aim for all children to bring a healthy

lunch from home. We would like parents to ensure that the food they bring is healthy and nutritious. Consider fresh fruit, wholemeal bread, wraps, noodles and foods low in sugars. Good nutrients are desirable.

We naturally celebrate your child's birthday at De Eglantier. We encourage healthy treats. Of course, your child will be given the opportunity to treat in your child's group. A small amount is desirable and we are very much in favour of a healthy treat for the children and the teacher/pupil.

Tip: please also ask the teacher if there are children with special diets or allergies (cow's milk, colourings, etc.)

We also place a strong emphasis on healthy eating within our childcare facilities. This is reflected in the meals and snacks we offer throughout the day. We strive to offer a varied and nutritious menu that adheres to healthy eating guidelines.

### Head lice

Unfortunately, children sometimes have head lice. We request you inform the IKC when your child has head lice. We can then notify the other parents. After each holiday, parents are asked per group to check all children for head lice. If head lice are found during your child's check, you



IB-BUILDING T 015 256 42 08  
RH-BUILDING T 015 256 42 08  
LUNCH BREAK T 015 256 42 08  
BSO IB T 06 294 09 623  
PLAYGROUP T 06 153 51 196  
VSO / BSO RH T 06 153 51 196  
DAYCARE CENTRE T 06 580 23 065



# FEBRUARY 2026



Monday	Tuesday	Wednesday	Thursday	Friday	weekend
NOTES	NOTES	NOTES	NOTES	NOTES	
					1
05					
2	3	4	5	6	7
	Group 8 Attainment test	IKC Study day Childcare CLOSED	Group 5/6 Dodgeball tournament	Newsletter 8	
					8
06					
9	10	11	12	13	14
		EY Schoolplay	Group 7/8 Dodgeball tournament		
					15
07					
16	17	18	19	20	21
Spring break Childcare centre OPEN	Spring break Childcare centre OPEN	Spring break Childcare centre OPEN	Spring break Childcare centre OPEN	Spring break Childcare centre OPEN	
					22
08					
23	24	25	26	27	28
IPC EY Flowers and plants IPC MP1 Buildings IPC MP2 They make a difference IPC MP3 Our place in space <b>Free day</b> Childcare centre OPEN	20.00 OR meeting 19.30 MR meeting	08.30-09.30 Coffee morning IB Head Lice check	First report card		
09					

### SCHOOLTIME EDUCATION

Monday, Tuesday,  
Thursday, Friday  
8.30 - 12.00  
13.00 - 15.00  
Wednesday  
8.30 - 12.00

### OPENING HOURS

DAYCARE CENTRE  
daily  
7.30 - 18.30  
PLAYGROUP  
Monday, Tuesday,  
Thursday, Friday  
8.15 - 12.15  
PRE-SCHOOL CARE (VSO)  
Monday, Tuesday,  
Thursday, Friday  
7.30 - 8.30  
AFTER-SCHOOL CARE (BSO)  
Monday, Tuesday,  
Thursday, Friday  
15.00 - 18.30  
Wednesday  
12.00 - 18.30  
holidays and  
schoolfree days:  
7.30 - 18.30

will be approached by the teacher or pedagogical staff member. You must then treat your child at home (regular combing for at least two weeks).

### Homework

Grade 5 and up receive weekly homework. The homework consists of preparing for spelling tests, presentations or a book review and making assignments. From grade 6, children have a homework folder to take home and return homework to school.

The teacher will ascribe at least one test per week to the children. In groups 7 and 8, the children have a planner to write down the tests and homework to plan. When your child uses after-school care, homework support is possible.

### IKC guide

The IKC has published an IKC guide (part A), in which you can read about the goals we pursue and how we intend to achieve them. The school guide is provided digitally to the parents.  
You can find any updated versions on the website. This calendar (part B) is updated annually and handed out to all parents of the IKC at the start of the school year.

### Insurance

IKC De Eglantier has taken out collective accident insurance for all children, employees, volunteers, and helping parents. This insurance is valid during IKC times and for all activities organised by the school, such as workweek and trips. This insurance does not apply to damaged personal property, such as bicycles, clothing and glasses. For this, you must take out a W.A. insurance yourself.

### Lost and Found objects

Lost and found items are collected in special baskets at every location. We advise you not to let your child bring any valuables to school. Found objects that are not collected will be displayed in the hall for at least a week before a holiday. If the owner has not yet claimed them, we will donate them to a good cause, or they will be thrown away.

### Lunch break care

Most children eat lunch at school in the afternoon. During lunch hour, the children can have lunch and play between noon and 1 p.m. under the supervision of assistants. The school provides the organisation of the lunch break care. You pay by direct debit.  
For the incidental lunch care, these rates apply: € 3 per time/per child and € 1,60 with a subscription per year/per



IB-BUILDING T 015 256 42 08 LUNCH BREAK T 015 256 42 08 BSO IB T 06 294 09 623 PLAYGROUP T 06 153 51 196 VSO / BSO RH T 06 153 51 196 DAYCARE CENTRE T 06 580 23 065 RH-BUILDING T 015 256 42 08

# MARCH 2026



Monday	Tuesdag	Wednesday	Thursdag	Friday	weekend
NOTES	NOTES	NOTES	NOTES	NOTES	
					1
09					
2	3	4	5	6	7
Fifth JMR meeting 15.00 - 17.00 Group A through 7 Parent teacher meeting	15.00 - 21.00 Group A through 7 Parent teacher meeting GMR meeting	13.00 - 17.00 Group A through 7 Parent teacher meeting	15.00 - 17.00 Group A through 7 Parent teacher meeting	15.00 - 17.00 Group A through 7 Parent teacher meeting RH Evacuation exercise Newsletter 9	
					8
10					
9	10	11	12	13	14
OC meeting IB Evacuation exercise		MP3 School play		12.00 - 13.00 TSO RH Evacuation exercise	
					15
11					
16	17	18	19	20	21
Groep 3 through 8 Open PE class 12.00 - 13.00 TSO IB Evacuation exercise  Week Public Education	Groep 3 through 8 Open PE class 20.00 OR meeting 19.30 MR meeting	9.30 - 11.00 Open morning IKC gr 3 through 8 Kangaroo competition	Studyday Daycare OPEN	Studyday Daycare OPEN	
					22
12					
23	24	25	26	27	28
Group 6 Practice biking to the school garden	Group 8 Theory traffic exam			Newsletter 10	
					29
					Summer time
13					

### SCHOOLTIME EDUCATION

Monday, Tuesday,  
Thursday, Friday  
8.30 - 12.00  
13.00 - 15.00  
Wednesday  
8.30 - 12.00

### OPENING HOURS

DAYCARE CENTRE  
daily  
7.30 - 18.30  
PLAYGROUP  
Monday, Tuesday,  
Thursday, Friday  
8.15 - 12.15  
PRE-SCHOOL CARE (VSO)  
Monday, Tuesday,  
Thursday, Friday  
7.30 - 8.30  
AFTER-SCHOOL CARE (BSO)  
Monday, Tuesday,  
Thursday, Friday  
15.00 - 18.30  
Wednesday  
12.00 - 18.30  
holidays and  
schoolfree days:  
7.30 - 18.30

day/per child. The costs of incidental lunch care costs are settled twice a year, in January and in September.

You can register and deregister for incidental lunch care in the communication app, or by telephone between 8.00 a.m. and 11.00 a.m. with the TSO coordinator, or by sending an e-mail before 11.00 a.m. to: tso@eglantierdelft.nl

If you are interested in the role of lunch care assistant, you can register with the TSO coordinator.

### Mobile phone/smartwatch

In the IKC, the use of mobile phones is prohibited. If there are calamities or urgent messages for your child, you may call the IKC phone number. We can imagine that you like to give your child a mobile to take to school. When children bring a mobile phone, they must remain switched off and in their school bag during school hours. We are also seeing more and more children with smartwatches.

A smartwatch is an Internet-enabled watch that allows you not only to see the time but also to make calls and sometimes photos or videos. In the classroom, we see that children are distracted by it. Consequently, children keep their smartwatch in their bags during school hours. To avoid losing or damaging the smartwatch, we advise you not to let your child wear a smartwatch to

school. The school is not liable for loss, theft of or damage to the mobile phone or the smartwatch.

### Physical education

Grades 1 and 2 have physical exercise or dance in the playroom. They exercise in their underwear with sneakers. Groups 3 to 8 receive physical education twice a week from a professional teacher. Sneakers, a gym suit or shorts with a shirt are required. For safety reasons, the children wear no jewellery, and long hair needs to be worn in a tail or braid.

If your child cannot participate in the gym class, you must notify the teacher via the communication app.

The groups that have gymnastics at 8.30 a.m. and 1 p.m. are expected at the gym room on that morning or afternoon; they do not go to school first. Children who use pre-school care are brought to the gym room. The door opens at 8.15 a.m. and 12.50 p.m. The kids must be ready to start the lesson at 8.30 and 13.00. The children who finish gym class at 12.00 pm and 3.00 p.m. can be picked up at the gym room.

Parents with a low income can also use the Delftpas to pay (part of) the costs of sports and culture. The Jeugdsportfonds (€ 325) and the Jeugdcultuurfonds (€ 450) contribute to the costs of sport and culture. You



IB-BUILDING T 015 256 42 08  
RH-BUILDING T 015 256 42 08  
LUNCH BREAK T 015 256 42 08  
BSO IB T 06 294 09 623  
PLAYGROUP T 06 153 51 196  
VSO / BSO RH T 06 153 51 196  
DAYCARE CENTRE T 06 580 23 065

# APRIL 2026



Monday	Tuesday	Wednesday	Thursdag	Friday	weekend
NOTES	NOTES	1	2	3	4
		Group 2, 4, 6 and 8 Start school garden 19.30-20.30 Coffee evening IB		Good Friday Childcare centre OPEN	
					5
14					
6	7	8	9	10	11
Easter Monday Childcare centre CLOSED		Group 8 Anglia test			
					12
15					
13	14	15	16	17	18
Sixth JMR meeting	GMR meeting	MP1 School play		Newletter 11	
					19
					Easter Sunday
16					
20	21	22	23	24	25
	19.30 MR meeting	Group 1 through 8 Portfolio talks	Group 1 through 8 Portfolio talks	Group 1 through 8 Portfolio talks	
					26
17					
27	28	29	30	NOTES	
May break Childcare centre CLOSED	May break Childcare centre OPEN	May break Childcare centre OPEN	May break Childcare centre OPEN		
Kingsday					
18					

### SCHOOLTIME EDUCATION

Monday, Tuesday,  
Thursday, Friday  
8.30 - 12.00  
13.00 - 15.00  
Wednesday  
8.30 - 12.00

### OPENING HOURS

DAYCARE CENTRE  
daily  
7.30 - 18.30  
PLAYGROUP  
Monday, Tuesday,  
Thursday, Friday  
8.15 - 12.15  
PRE-SCHOOL CARE (VSO)  
Monday, Tuesday,  
Thursday, Friday  
7.30 - 8.30  
AFTER-SCHOOL CARE (BSO)  
Monday, Tuesday,  
Thursday, Friday  
15.00 - 18.30  
Wednesday  
12.00 - 18.30  
holidays and  
schoolfree days:  
7.30 - 18.30

can apply for this contribution separately or both through the school management.  
For more information: [www.jeugdsportfonds.nl](http://www.jeugdsportfonds.nl) or [www.jeugdcultuurfonds.nl](http://www.jeugdcultuurfonds.nl).

### Play area

During the lunch break (12.00 to 13.00), the square is intended for the children who have lunch at school. The other children can enter the square at 12.45 at the I.B. building and 12.55 at the R.H. building. After school, the square is used for after-school care.  
At the I.B. building, children who do not use the childcare are also allowed to play on the square. We expect that they will adhere to the school rules. At the R.H. building, the square is also used for childcare after school, and it is not allowed to play freely after school.

### Protocol

Protocols have been drawn up within the IKC. This includes a domestic violence protocol, behaviour, cycling, lice, pedagogical plan of approach and mourning. The protocols can be viewed by appointment with the management.  
The education inspection report and the GGD report can be found on our websites.

### Report cards

At the childcare, each year you will be invited to discuss your child's development during a progress meeting with the pedagogical staff. For the after-school care, an introductory meeting takes place at the start of care. During this meeting, everything related to the child is discussed, such as home situation, allergies, etc. After three months, parents have a follow-up meeting about the child's development. A new progress meeting follows each birthday.  
The children do not receive a report card in grades 1 and 2. The children are observed during their play based on the "KIJK!" development lines. The development lines are used as a starting point for the annual developmental review between the employee, the parents and the child.  
In the school, an introductory meeting takes place around September. In the introductory interview, we discuss who the child is, the child's interests and talents. In addition, we pay attention to what the child needs this school year to achieve optimal development. Agreements for the future are made with your child. In February, the development discussion takes place following the first report. In July you will receive the second report.  
In addition, you may contact the teacher(s) for information after school. Please make an appointment for this. Teachers may also take the initiative for an interview.



IB-BUILDING  
T 015 256 42 08  
RH-BUILDING  
T 015 256 42 08  
LUNCH BREAK  
T 015 256 42 08  
BSO IB  
T 06 294 09 623  
PLAYGROUP  
T 06 153 51 196  
VSO / BSO RH  
T 06 153 51 196  
DAYCARE CENTRE  
T 06 580 23 065

# MAY 2026



Monday	Tuesdag	Wednesday	Thursdag	Friday	weekend
NOTES	NOTES	NOTES	NOTES	1	2
				May break Childcare centre OPEN	
					3
18					
4	5	6	7	8	9
Childcare centre OPEN	Liberation day Childcare centre CLOSED	May break Childcare centre OPEN	May break Childcare centre OPEN	May break Childcare centre OPEN	
					10
Memorial Day					Moederdag
19					
11	12	13	14	15	16
OC meeting	20.00 OR meeting	Head lice check	Ascension Day Childcare centre CLOSED	Childcare centre OPEN	
					17
20					
18	19	20	21	22	23
IPC EY Holiday IPC MP1 Holiday IPC MP2 Airports IPC MP3 Holiday show Seventh JMR meeting	19.30 MR meeting	Sports Day		Newsletter 12	
					24
					Pentecost
21					
25	26	27	28	29	30
Whit Monday Childcare centre CLOSED	Study day Daycare OPEN	Reserve Sports Day			
					31
22					

### SCHOOLTIME EDUCATION

Monday, Tuesday,  
Thursday, Friday

8.30 - 12.00  
13.00 - 15.00

Wednesday

8.30 - 12.00

### OPENING HOURS

DAYCARE CENTRE  
daily

7.30 - 18.30

PLAYGROUP

Monday, Tuesday,  
Thursday, Friday

8.15 - 12.15

PRE-SCHOOL CARE (VSO)

Monday, Tuesday,  
Thursday, Friday

7.30 - 8.30

AFTER-SCHOOL CARE (BSO)

Monday, Tuesday,  
Thursday, Friday

15.00 - 18.30

Wednesday

12.00 - 18.30

holidays and  
schoolfree days:

7.30 - 18.30

### Suspension and expulsion

In consultation with Stichting Librijn, the IKC has drawn up clear rules for suspension and expulsion in the event of unacceptable behaviour of children and parent(s) and the school's inability to deal with certain situations or behaviour. Stichting Morgen also a policy for this situation. For more information about that, please contact Stichting Morgen.

The school uses a behavioural protocol. These protocols can be found on our website. By intolerable behaviour, we mean:

- refusing to listen;
- refusing to participate in activities;
- being rude or cheeky; insulting, discriminating, cursing, swearing, threatening;
- fighting, hitting and kicking;
- bullying;
- committing vandalism or theft;
- coming late to school regularly.

By "School's inability to deal with certain situations or behaviour", we mean:

The situation that arises when the school, in general, can no longer provide a responsible, adequate answer to the specific instruction and educational needs of a child.

Suspension means denial of access to the IKC for a day.

Expulsion means that the child is deregistered from the school. The right to be heard will be applied in all cases. The competent authority will be involved in the procedure. A definitive expulsion can only occur if the school's management has ensured that another school or institution is willing to admit the child, with a maximum period of eight weeks.

This suspension and expulsion policy also applies if a parent shows aggressive and intimidating behaviour towards other parents, staff members, management, and/or the children.

In the event of a violation of the law, we, as IKC, will always involve the police.

### Toilet trained

We assume that children who go to primary school are toilet trained. It is normal for children of kindergarten age to have an "accident", so provide spare clothing. If your child is not toilet trained for medical reasons, we will try to find a solution together. As a school, we only change children when an "accident" has occurred.



IB-BUILDING  
T 015 256 42 08  
RH-BUILDING  
T 015 256 42 08

LUNCH BREAK  
T 015 256 42 08

BSO IB  
T 06 294 09 623

PLAYGROUP  
T 06 153 51 196

VSO / BSO RH  
T 06 153 51 196

DAYCARE CENTRE  
T 06 580 23 065

# JUNE 2026



Monday	Tuesdag	Wednesday	Thursdag	Friday	weekend
1	2	3	4	5	6
Evening 4-day walk	Evening 4-day walk	09.30 - 11.00 Open Morning IKC	Day for lunch break care assistants Evening 4-day walk	Evening 4-day walk	
					7
22					
8	9	10	11	12	13
Cito test week 1	GMR meeting	08.30-09.30 Coffee morning IB		Newsletter 13	
					14
23					
15	16	17	18	19	20
Cito test week 2	20.00 OR meeting				
					21
					Fathers day
24					
22	23	24	25	26	27
Eighth JMR meeting				Free day Daycare OPEN	
					28
25					
29	30	NOTES	NOTES	NOTES	
	19.30 MR meeting				
26					

### SCHOOLTIME EDUCATION

Monday, Tuesday,  
Thursday, Friday  
8.30 - 12.00  
13.00 - 15.00  
Wednesday  
8.30 - 12.00

### OPENING HOURS

DAYCARE CENTRE  
daily  
7.30 - 18.30  
PLAYGROUP  
Monday, Tuesday,  
Thursday, Friday  
8.15 - 12.15  
PRE-SCHOOL CARE (VSO)  
Monday, Tuesday,  
Thursday, Friday  
7.30 - 8.30  
AFTER-SCHOOL CARE (BSO)  
Monday, Tuesday,  
Thursday, Friday  
15.00 - 18.30  
Wednesday  
12.00 - 18.30  
holidays and  
schoolfree days:  
7.30 - 18.30

### Use of medication

Children are with us for several hours a day. During this time, they may need to take prescribed medication. It can also happen that children experience pain that can seemingly be solved easily by painkillers (brought along) Because medicines can sometimes have unexpected consequences, we handle them with great care. Staff members do not administer (light) medication to children unless parents request this, the staff members have been instructed, and agreements have been made. IKC staff are not liable for any side effects/consequences that may occur as a result of the medicine/medical action or forgetting to administer the medicine.

Therefore, the teachers and pedagogical staff only give children medicine if there is a signed statement from parents or attending physicians.

### Workweek

In group 7, the children go on a two-day trip together. The children spend one night at a scouting house. This is in preparation for the working week in group 8. Children experience what it is like to spend a night away from home with classmates and to have to travel a considerable distance by bike.

In group 8, the children go on a workweek for four

days. During the information meeting and a special information meeting before this week, you will receive information about the content of the workweek. The costs of these two workweeks are € 150.

The work week takes place at the Natuurvrienden-huis De Bosbeek in Bennekom. The program is varied and is in line with the curriculum from group 8. Trips are made by bike to the Airborne Museum, the open air museum, and a wildlife safari.



IB-BUILDING  
T 015 256 42 08  
RH-BUILDING  
T 015 256 42 08

LUNCH BREAK  
T 015 256 42 08

BSO IB  
T 06 294 09 623

PLAYGROUP  
T 06 153 51 196

VSO / BSO RH  
T 06 153 51 196

DAYCARE CENTRE  
T 06 580 23 065





Monday	Tuesday	Wednesday	Thursdag	Friday	weekend
NOTES	NOTES	1	2	3	4
		Parents come see School garden		Newsletter 14	
					5
27					
6	7	8	9	10	11
OC meeting		First harvest school garden  Group 8 Anglia Party		Group 8 Farewell evening	
					12
28					
13	14	15	16	17	18
Group 8 Activity	Second Report card		Newsletter 15	Free day Childcare centre OPEN	
					19
29					
20	21	22	23	24	25
Summer holidays Childcare centre OPEN	Summer holidays Childcare centre OPEN	Summer holidays Childcare centre OPEN	Summer holidays Childcare centre OPEN	Summer holidays Childcare centre OPEN	
					26
30					
27	28	29	30	31	
Summer holidays Childcare centre OPEN	Summer holidays Childcare centre OPEN	Summer holidays Childcare centre OPEN	Summer holidays Childcare centre OPEN	Summer holidays Childcare centre OPEN	
31					

SCHOOLTIME EDUCATION

Monday, Tuesday,  
Thursday, Friday  
8.30 - 12.00  
13.00 - 15.00  
Wednesday  
8.30 - 12.00

OPENING HOURS

DAYCARE CENTRE  
daily  
7.30 - 18.30  
PLAYGROUP  
Monday, Tuesday,  
Thursday, Friday  
8.15 - 12.15  
PRE-SCHOOL CARE (VSO)  
Monday, Tuesday,  
Thursday, Friday  
7.30 - 8.30  
AFTER-SCHOOL CARE (BSO)  
Monday, Tuesday,  
Thursday, Friday  
15.00 - 18.30  
Wednesday  
12.00 - 18.30  
holidays and  
schoolfree days:  
7.30 - 18.30

Useful (e-mail)adressen and phone numbers

Integraal Kindcentrum De Eglantier  
Primary school | Daycare  
IB-building domain 7-12 years  
Ina Boudier-Bakkerstraat 2  
2624 NX Delft  
T 015 256 42 08 (direct dial 1)  
E directie@eglantierdelft.nl  
IBAN NL16 RABO 0301 8075 07. Librijn De Eglantier

Lunch Break Care  
E tso@eglantierdelft.nl  
T 015 256 42 08 (doorkiesnummer 1) E  
After-school care IB Domain 7 - 12 years  
T 06 294 09 623  
E eglantier1@kinderopvangmorgen.nl E

Stichting Librijn openbaar onderwijs

Postbus 121  
2600 AC Delft  
T 015 251 22 80  
Visiting address: Building Mercurius  
Papsouwselaan 119d  
2624 AK Delft  
I www.librijn.nl

Primary school | Playgroup | Daycare  
RH-building domain 0-7 years  
Roland Holstlaan 917-919  
2624 KE Delft  
T 015 256 42 08 (direct dial 2)  
I www.eglantierdelft.nl

Playgroup  
T 06 153 51 196  
eglantierpeuteropvang@kinderopvangmorgen.nl  
Daycare centre  
T 06 580 23 065  
eglantierkdv@kinderopvangmorgen.nl  
Pre-school care/After-school care RH  
T 06 153 51 196  
E eglantier3@kinderopvangmorgen.nl

Daycare Morgen  
Postbus 593  
2280 AN Rijswijk  
T 070 792 01 00  
Visiting address:  
Martin Campsplaan 3  
2286 SB Rijswijk  
E info@kinderopvangmorgen.nl  
I www.kinderopvangmorgen.nl



# AUGUST 2026



Monday	Tuesdag	Wednesday	Thursdag	Friday	weekend
				1	2
Summer holidays Childcare centre OPEN	Summer holidays Childcare centre OPEN	Summer holidays Childcare centre OPEN	Summer holidays Childcare centre OPEN	Summer holidays Childcare centre OPEN	
					3
31					
4	5	6	7	8	9
Summer holidays Childcare centre OPEN	Summer holidays Childcare centre OPEN	Summer holidays Childcare centre OPEN	Summer holidays Childcare centre OPEN	Summer holidays Childcare centre OPEN	
					10
32					
11	12	13	14	15	16
Summer holidays Childcare centre OPEN	Summer holidays Childcare centre OPEN	Summer holidays Childcare centre OPEN	Summer holidays Childcare centre OPEN	Summer holidays Childcare centre OPEN	
					17
33					
18	19	20	21	22	23
Summer holidays Childcare centre OPEN	Summer holidays Childcare centre OPEN	Summer holidays Childcare centre OPEN	Summer holidays Childcare centre OPEN	Summer holidays Childcare centre OPEN	
					24
34					
25	26	27	28	29	30
Summer holidays Childcare centre OPEN	Summer holidays Childcare centre OPEN	Summer holidays Childcare centre OPEN	Summer holidays Childcare centre OPEN	Summer holidays Childcare centre OPEN Last day of summer holidays	
					31
35					

SCHOOLTIME EDUCATION

Monday, Tuesday,  
Thursday, Friday  
8.30 - 12.00  
13.00 - 15.00  
Wednesday  
8.30 - 12.00

OPENING HOURS

DAYCARE CENTRE  
daily  
7.30 - 18.30  
PLAYGROUP  
Monday, Tuesday,  
Thursday, Friday  
8.15 - 12.15  
PRE-SCHOOL CARE (VSO)  
Monday, Tuesday,  
Thursday, Friday  
7.30 - 8.30  
AFTER-SCHOOL CARE (BSO)  
Monday, Tuesday,  
Thursday, Friday  
15.00 - 18.30  
Wednesday  
12.00 - 18.30  
holidays and  
schoolfree days:  
7.30 - 18.30

continued useful (e-mail) addresses and phone numbers

Vertrouwenspersoon Librijn	Vertrouwenspersoon kinderopvang Morgen
Mevr. Cissy van Eede (via onderwijsadvies Gouda)	Mevr. Judith v.d. Kraan
T 079 - 3295607	T 070 792 01 14
E c.vaneeede@onderwijsadvies.nl	E jvanderKraan@kinderopvangmorgen.nl

Landelijke Klachtencommissie (LKC)

Postbus 85191  
3508 AD Utrecht  
Visiting address: Building Woudstede  
Zwarte Woud 2  
Utrecht  
E info@onderwijsgeschillen.nl  
I www.onderwijsgeschillen.nl  
T 030 280 95 90

Vereniging Openbaar Onderwijs

Beleidsadviseur medezeggenschap en openbaar onderwijs  
T 036 533 15 00 (voor dringende zaken buiten kantoortijden: 06 472 52 765)  
E info@voo.nl  
I www.voo.nl



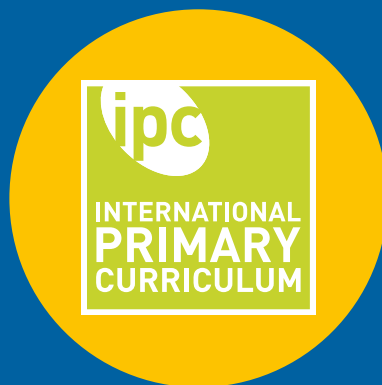
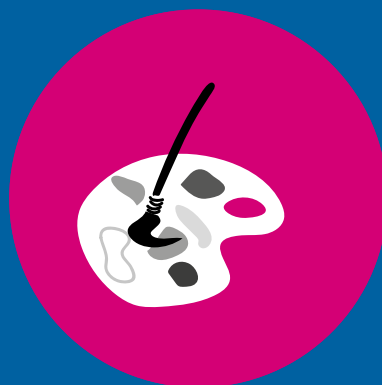
IB-BUILDING T 015 256 42 08 RH-BUILDING T 015 256 42 08	LUNCH BREAK T 015 256 42 08	BSO IB T 06 294 09 623	PLAYGROUP T 06 153 51 196	VSO / BSO RH T 06 153 51 196	DAYCARE CENTRE T 06 580 23 065
--	--------------------------------	---------------------------	------------------------------	---------------------------------	-----------------------------------

## IKC De Eglantier

IB-Building  
Ina Boudier-Bakkerstraat 2  
2624 NX Delft  
(015) 256 42 08

RH-Building  
Roland Holstlaan 917 - 919  
2624 KE Delft  
(015) 256 42 08

directie@eglantierdelft.nl  
www.eglantierdelft.nl  
Librijn - De Eglantier  
NL16 RABO 0301 8075 07



# SCHOOLACTIVITIES 2025 - 2026