

This is the calendar of Integrated Child Centre De Eglantier (IKC). Together with the IKC guide (part A), the calendar (part B) contains all the information about the IKC. In the calendar, you will find a detailed description of the services that the IKC offers you and your child(ren): education and childcare from 0 to 12 years.

Children, teachers, teaching staff, support staff and parents/caregivers all learn and work together at the IKC.

In this IKC calendar, you will find practical information from IKC De Eglantier and what you can expect from us as IKC. For example: how we deal with special leave, trips and all important dates.

Where it says 'parent(s)', you may also read caregiver(s).

We hope you enjoy reading and using this IKC calendar.

The IKC Eglantier in short

IKC Eglantier is a cooperation between Stichting Librijn Openbaar Onderwijs (Public Education Foundation) and Kinderopvang Morgen.

Librijn is responsible for the public primary schools in Delft and Rijswijk.

Kinderopvang Morgen is available for children between 6 weeks to 12 years at many locations in Rijswijk, The Hague, het Westland, and Delft. IKC De Eglantier provides a playgroup, a daycare centre, pre-school care, lunch break care, and after-school care (including holidays), as well as primary education.

At IKC De Eglantier, we work based on a jointly supported pedagogical and educational vision performed by one team. We do this together for the benefit of all the children.

Professionals and parents work together in the IKC to give support tailored to the development of the children. Parents and children are allowed to make their own choices from the services offered at the IKC Eglantier. This makes it easier for parents to combine work and care between 7:30 to 18:30.

We strive for the optimal upbringing and inclusive education for each child. We do this by providing a cohesive curriculum of continuous developmental trajectories for children from 0 to 12 years based on the International Primary Curriculum (IPC) and Bilingual Primary Education (TPO). At the childcare, we work with the program Early Bird, which introduces the children to English in a playful manner.

The International Primary Curriculum is an integrated, thematic, and creative curriculum for children aged 4 to 12 years, focusing on creative and social studies subjects. The IPC is composed in such a way that it provides insight and improves learning.

The IKC de Eglantier participated in a pilot of the Ministry of Education in 2015, which means that all groups receive education in English for approximately 30% of the time. The pilot was concluded in May 2023. All participating schools may continue their bilingual education pending the addendum to the law

VISION



Integrated Children's Centre (IKC) De Eglantier is the place for education, childcare and development of children aged 0 to 12. In IKC De Eglantier, we work together on an integrated range with a strong focus on continuous development lines and shared responsibility for learning and education.

Action-oriented, cooperative, playful and goal-oriented learning to meet (individual) learning needs are central to our educational range.

We pay attention to ourselves and others

From a safe pedagogical climate, we offer children personal and social skills to develop as global citizens.

We pay attention to a solid basis

We offer children a solid basis to independently take their place in the world. We do this by working on (individual) educational needs in an action-oriented manner. A solid basis in maths, language, reading (comprehension), spelling and (fine and gross) motor skills is the basis for further development.

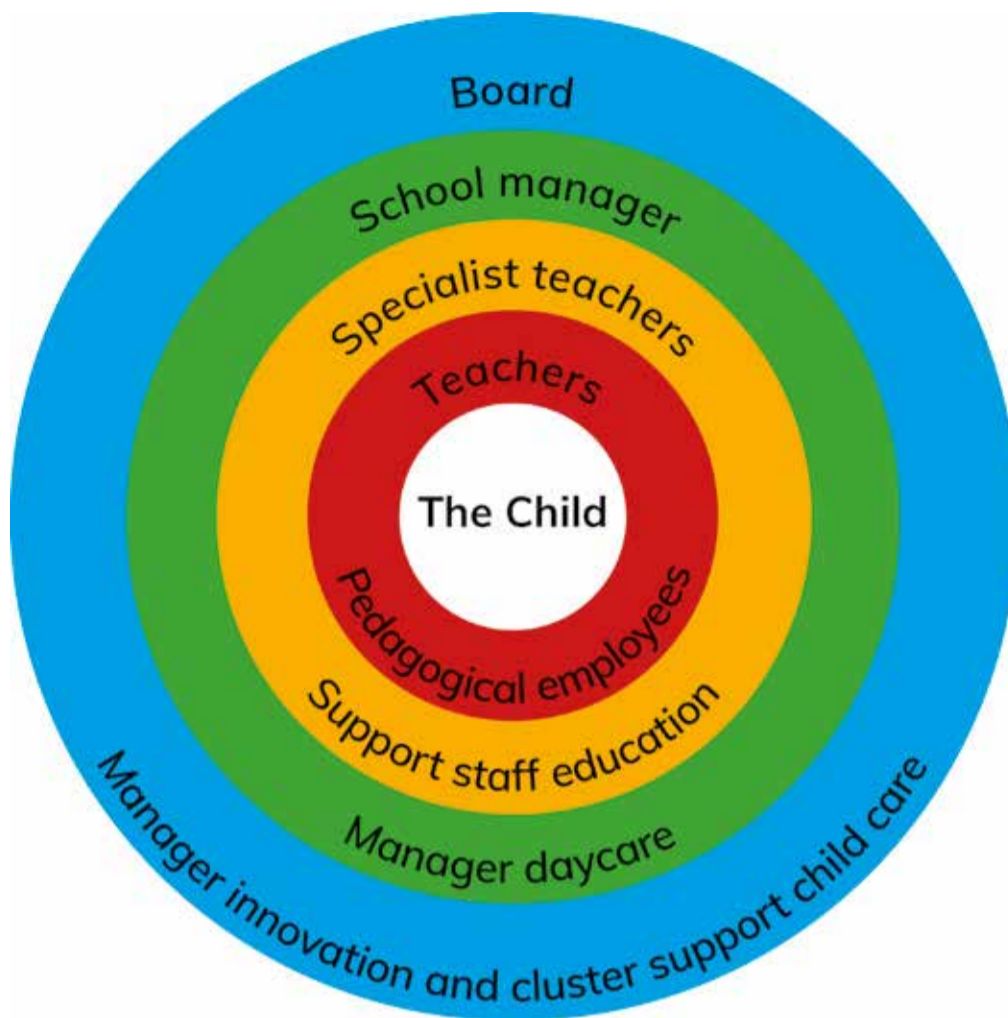
We pay attention to the world

We emphasise world citizenship by working with the International Primary Curriculum (IPC) in addition to a solid foundation and offer all children extra English, music and nature education. To teach children to take ownership of their learning, each child works in collaboration with teachers and parent(s) to develop a personal portfolio. We also go out into the world and undertake educational trips

We go out into the World!

Organisation chart

Our IKC focuses on the child, which can be seen in our organisation circle below:



IKC-employees

School manager
Manager daycare

Yvonne den Haan Mon | Tue | Wed | Thu | Fri
Richard v/d Zwan Mon | Tue | Thu | Fri

Leerkrachten

Groep A	Miss Sandra van Karsen	Wed Thu Fri	Miss Aynsle Bodin	Mon Tue	
Groep B	Miss Hayley Collin	Mon Tue Wed	Mr Aad van Dam		Thu Fri
Groep C	Mr Aad van Dam	Mon Tue Wed	Miss Christine Sabol		Wed Thu Fri
Groep D	Miss Linde Ras	Mon Tue Wed	Miss Aynsle Bodin		Thu Fri
Groep 3	Miss Els Harpman	Mon Tue Wed	Miss Theodora Papachristou		Thu
Groep 3/4	Miss Denise Komen	Wed Thu Fri	Miss Yvonne Kaijser	Mon Tue	
Groep 4	Miss Roos de Haze	Mon Tue Wed Thu	Miss Theodora Papachristou		Fr
Groep 5	Miss Bianca Gerritse	Mon Tue Wed Thu Fri			
Groep 5/6	Miss Anne Laarakker	Mon Tue Wed Thu Fri			
Groep 6	Mr Jurgen v/d Eng	Mon Tue Wed Thu	Miss Paula Dinger		Fr
Groep 7	Miss Sophie Heijkoop	Mon Tue Wed	Miss Hayley Collin		Thu
Groep 7/8	Mr Ard Groeneveld	Mon Tue Wed	Miss Suzan Luscuere		Thu
Groep 8	Miss Naomi van der Vlucht	Mon Tue Wed Thu Fri			

Specialist teachers

Internal guidance counsellor	Miss Daniëlle Kunz	Mon Tue Wed Thu Fri	T 015 2564208
Education specialist	Miss Paula Dinger	Wed Thu Fri	
Contact person safe school	Miss Sandra van Karsen	Tue Wed Thu Fri	T 015 2564208
Contact person Focus education	Miss Daniëlle Kunz	Mon Tue Wed Thu Fri	
Confidential counsellor daycare	Judith van der Kroon		T 06 29409668
Coordinator English	Miss Marly de Geus	Mon Tue Wed Thu Fri	
Specialist teacher English	Miss Caitlin Alderdice	Wed Thu Fri	
Specialist teacher English	Miss Kseniya Shkumat	Tue Wed	Fri
Specialist teacher English	Miss Sandra Rodrigues	Tue Wed Thu	
ICT coordinator	Miss Sandra van Karsen		
Language coordinator	Miss Anne Laarakker		
Math coordinator	Mr Ard Groeneveld		
IPC coordinators	Miss Denise Komen & Miss Naomi van der Vlucht		
Physical Education	Miss Michaela Brachalal	Mon Tue Wed	
Music teacher	Miss Isabel Belmejo		
Coordinator upper groups	Mr Ard Groeneveld		
Coordinator lower groups	Miss Marly de Geus		

Support staff education

Administration	Vacancy	Tue	
Concierge IB building	Miss Roshnie Bagroep	Mon Tue	Thu Fr
Philosophy teacher	Miss Djoeke Hooimeijer		Fr
Teacher assistant	Miss Evelien de Fijter	Mon Tue Wed Thu	
Education assistant	Miss Rahieda Hossainkhan	Mon Tue	Fr
Education assistant	Miss Myra Chedi	Wed Thu	Fr
Education assistant	Miss Petra van Leeuwen	Tue Wed Thu	
Education assistant	Miss Annette Peterse	Mon Tue	Thu Fr
Education assistant	Miss Corine Dijkshoorn	Mon Tue	
Education assistant	Miss Fleur Schotting	Mon	Thu Fr

Pedagogical employees childcare

Childcare 0 to 4 years	Astrid Koestal, vacancy, Carmen Bollen, vacancy
Pre-school care 2 to 4 years	Jill van Driel, Daan Korstanje, Patricia Duynisveld
After school care domain 4 to 7 years	Daan Korstanje, Maxime van Oel
After school care domain 8 to 12 years	Femke Noordermeer, Jill van Driel
Pedagogical coach	Femke Noordermeer

Vrijwilligers

Many volunteers work at IKC De Eglantier, including interns, reading coaches, staff members in between-school care, the gardeners, and parents for various tasks.



AUGUST 2024



Monday	Tuesday	Wednesday	Thursday	Friday	weekend
12	13	14	15	16	17
Childcare centre OPEN	Childcare centre OPEN	Childcare centre OPEN	Childcare centre OPEN	Childcare centre OPEN	
					18
33					
19	20	21	22	23	24
Childcare centre OPEN	Childcare centre OPEN	Childcare centre OPEN	Childcare centre OPEN	Childcare centre OPEN Lost day of the holiday	
					25
34					

Daily activities

The IKC is open from 7.30 a.m. to 6.30 p.m. Parent(s) may enter the daycare centre and nursery school to say goodbye.

In groups 1 to 8 of the school, we expect parents to say goodbye to their child outside before 8.30 a.m. This promotes the independence of the child and ensures a quiet start to the lessons.

In the morning, short messages can be passed on to the pedagogical staff member or to the teacher. There is no opportunity for longer conversations, although an appointment can be made through the communication apps for a conversation at a later time.

When the bell rings to go home at 12 noon and 3 p.m., the children come outside by themselves or with the teacher. The children who go to the after-school care are picked up after school to go to the daycare. The teachers of groups 1 and 2 see to it that the children are picked up.

When a child is picked up by someone other than the parents, please notify the teacher or pedagogical staff about this.

SCHOOLTIME EDUCATION

Monday, Tuesday,
Thursday, Friday

8.30 - 12.00
13.00 - 15.00

Wednesday
8.30 - 12.00

OPENING HOURS

DAYCARE CENTRE
daily

7.30 - 18.30

PLAYGROUP

Monday, Tuesday,
Thursday, Friday

8.15 - 12.15

PRE-SCHOOL CARE

Monday, Tuesday,
Thursday, Friday

7.30 - 8.30

AFTER-SCHOOL CARE

Monday, Tuesday,
Thursday, Friday

15.00 - 18.30

Wednesday
12.00 - 18.30

holidays and
schoolfree days:

7.30 - 18.30

CALL IN SICK EDUCATION

8.00 - 8.30 uur

IB-BUILDING/LUNCH BREAK

☎ 015 256 42 08
forwarding number 1

RH-BUILDING

☎ 015 256 42 08
forwarding number 2

CALL IN SICK PRE-SCHOOL CARE

via app

Attendance Call in sick

If your child is unexpectedly unable to come to the IKC due to illness or family circumstances, please inform us before 8:15 a.m. via the communication app.

Absence

If your child is absent at our IKC without notice, we will contact you around 9 a.m.

Your child's absence is carefully registered with the reason for the absence. The teacher will talk to you if your child is regularly late or absent. Agreements are made in this conversation. If the situation does not improve after discussions with the teacher, the IKC will report this to the attendance officer. Children of primary school age are subject to compulsory education, which is why different measures apply in case of systematic failure to attend school on time, and absences. Children from the age of four attend primary school. During the first year, your child is not yet subject to compulsory school attendance and you may, in consultation with the teacher, keep your child at home for an occasional afternoon if school is still too exhausting. From the age of five, all children are subject to compulsory education and must attend school every day.

Leave of absence

You can request a leave day for a child in case of serious circumstances, such as a move, a marriage of a family member, or an anniversary. You can download forms "request for exemption from school attendance" (verzoek om vrijstelling schoolbezoek) from the website. An application form must be submitted to the location director at least one month before the desired leave.

Join in the discussion and help Parental involvement

When parents and IKC team work well together, children will feel more comfortable at school and daycare. Parent(s), teachers, and pedagogical staff are expected to act in the child's best interest. Together we feel responsible for the development of children. Good collaboration is important in this. To ensure this, we make our IKC as accessible as possible for you. The basis for good communication between the various parties is trust, mutual understanding and respect. Sometimes it is necessary to maintain more regular contact between IKC and parents/guardians. This can promote the development of children. It may also be required to practise (extra) teaching material with your child.

We also expect a contribution from the parent(s) to your child's development. Every parent who registers their child thereby enters into a partnership between parents and the school. Together, we are responsible for the child's development. It may be a pleasant experience to talk with other parents about school business, things you notice in your child's development, or chat with other parents. Once a month, you will get the chance to do just that during a 'coffee morning'.

We assume that you are present at moments when your child's development is discussed such as the contact evenings, information evenings, and the portfolio interviews. An information evening will take place at the start of the new school year. Parent evenings on specific topics are also organised. During portfolio discussions, you will discuss the portfolios with your child.

We organise many activities for the children to be involved with skills and acquire knowledge in different ways. We regularly need the help of parent(s) for example, assistance with activities in the classroom, trips, traffic lessons, sports tournaments and the annual sports day

AUG/SEPT 2024



Monday	Tuesday	Wednesday	Thursday	Friday	weekend
26 IPC EY (gr. 1-2) I'm coming to help you IPC MP1 (gr. 3) The new group IPC MP1 (gr. 4) Time Detectives IPC MP2 (gr. 5/6) Paintings, pictures and images IPC MP3 (gr. 7) Leaders of change IPC MP3 (gr. 8) What if it happens to you? 35	27 Childcare Join rabbit Snuff	28 Head Lice check	29	30 Building RH Evacuation exercise Newsletter 1	31 1
2 Building IB Evacuation exercise	3 20.00 OR meeting 19.00 - 21.00 EY and MP1 Information evening	4	5 Group 7 School garden 19.00 - 21.00 MP2 and MP3 Information evening	6 12.00 - 13.00 TSO RH Evacuation exercise	7 8
36 9 12.00 - 13.00 TSO IB Evacuation exercise OC meeting	10 19.30 - 21.30 MR meeting	11 First JMR meeting	12	13	14 15
37 16 15.00 - 17.00 Group A through 8 Parents teacher meeting	17 15.00 - 17.00 Group A through 8 Parents teacher meeting Prinsjesdag	18 12.00 - 17.00 Group A through 8 Parents teacher meeting	19 15.00 - 21.00 Group A through 8 Parents teacher meeting Day of the pedagogical employee	20 15.00 - 17.00 Group A through 8 Parents teacher meeting Newsletter 2	21 22
38 23 Group 8 Workweek IPC MP1 gr 3 Forest hut	24 Group 8 Workweek	25 Group 8 Workweek	26 Group 8 Workweek European Day of Languages	27 Group 8 Free	28 29
39					

SCHOOLTIME EDUCATION

Monday, Tuesday,
Thursday, Friday

8.30 - 12.00
13.00 - 15.00

Wednesday

8.30 - 12.00

OPENING HOURS

DAYCARE CENTRE

daily
7.30 - 18.30

PLAYGROUP

Monday, Tuesday,
Thursday, Friday

8.15 - 12.15

PRE-SCHOOL CARE (VSO)

Monday, Tuesday,
Thursday, Friday

7.30 - 8.30

AFTER-SCHOOL CARE (BSO)

Monday, Tuesday,
Thursday, Friday

15.00 - 18.30

Wednesday

12.00 - 18.30

holidays and
schoolfree days:

7.30 - 18.30

Employee participation council (M.R.)

The MR represents the staff, parents and children of the IKC and has the task of advising the Board of Education, to agree and contribute to the policy of education. This school year, the M.R. consists of the following members:

Derk van Veen	Chairman (parent delegate)
Ronald Caris	Member (parent delegate)
Melchior van der Veen	Member (parent delegate)
Bianca Gerritse	Member (staff delegate)
Anne Laarakker	Member (staff delegate)
Annette Peterse	Member (staff delegate)

You can contact the M.R. at:

mr@eglantierdelft.nl

Joint Participation Council

The GMR represents the staff, parents and children of all schools within the organisation and has an important role to think with the school board about policies for the school organisation. Ronald van der Bosch represent our school.

Junior participation council (JMR)

From grades 5 to 8, two class representatives are chosen for the JMR. The JMR deals with improvements and wishes from the children of the IKC. Think of play opportunities, after-school activities, books etc. The delegates meet regularly. They discuss the agenda items with their classmates and are fed with information by them.

Parent Council (OR)

This school year, the Parents Council consists of the following members:

Patricia Bergenhenegouwen	Chairman
Kyra Smit	Treasurer
Dianne Watchorn	Secretary
Patrick Kronshorst	Member
Renske de Jong	Member
Naomi Bezemer-Emmerink	Member
Annemieke Poot	Member
Mandy Schenkeveld	Member

Evelien de Fijter

Staff representative

You can contact the OR at:

or@eglantierdelft.nl

Parents committee (O.C.)

The parents' committee represents the parents and children of childcare at IKC De Eglantier and is tasked with maintaining and improving the quality of childcare in cooperation with the childcare centre. This school year, the O.C. is formed by: Renske van Asten and Brigitte de Haas. Are you interested, and do you want to help think about all things related to childcare?

You can register with Richard van der Zwan:

rvanderzwan@kinderopvangmorgen.nl or

oceglantier@kinderopvangmorgen.nl



IB-BUILDING

T 015 256 42 08

RH-BUILDING

T 015 256 42 08

LUNCH BREAK

T 015 256 42 08

BSO IB

T 06 294 09 623

PLAYGROUP

T 06 153 51 196

VSO / BSO RH

T 06 153 51 196

DAYCARE CENTRE

T 06 580 23 065

OCTOBER 2024



Monday	Tuesday	Wednesday	Thursday	Friday	weekend
NOTES	1	2	3	4	5
		08.30-09.30 Coffee morning RH917 Start of Children's Book Week. Theme: "Lekker eigenwijs" Group 7 Field football tournament			Teacher's day 6
40					
7	8	9	10	11	12
Study day Childcare centre OPEN	20.00 OR meeting	Second JMR meeting Group 8 Field football tournament		Newsletter 3	End of Children's Book Week 13
41					
14	15	16	17	18	19
Childcare Autumn		09.30 - 11.00 Open Morning IKC MP2 School play Groep 7 and 8 Final Field football tournament			20
42					
21	22	23	24	25	26
					27
				Half Day Childcare centre OPEN	Wintertime
43					
28	29	30	31	NOTES	
Autumn break Childcare centre OPEN	Autumn break Childcare centre OPEN	Autumn break Childcare centre OPEN	Autumn break Childcare centre OPEN		
44					

SCHOOLTIME EDUCATION

Monday, Tuesday,
Thursday, Friday

8.30 - 12.00
13.00 - 15.00

Wednesday
8.30 - 12.00

OPENING HOURS

DAYCARE CENTRE
daily

7.30 - 18.30

PLAYGROUP

Monday, Tuesday,
Thursday, Friday

8.15 - 12.15

PRE-SCHOOL CARE (VSO)

Monday, Tuesday,
Thursday, Friday

7.30 - 8.30

AFTER-SCHOOL CARE (BSO)

Monday, Tuesday,
Thursday, Friday

15.00 - 18.30

Wednesday
12.00 - 18.30

holidays and
schoolfree days:

7.30 - 18.30

Friends of De Eglantier Foundation

The IKC accepts gifts from companies if they are intended for activities other than regular education and if its activities do not conflict with our objectives. The participation council monitors the implementation of this policy.

Parents and teachers founded Stichting Vrienden van De Eglantier Voorhof to support De Eglantier in realising projects that cannot be (fully) realised from the normal budget but are considered of great importance for cultural and nature education at the school. In school year 2023-2024, for example, donations were used to buy play materials for the play gym, new speakers and books for the English library.

If you would like to make a donation, please make out your contributions to: NL92 RABO 0300 5837 45 to Stichting Vrienden van De Eglantier.

If you would like to contribute to the spending or have any questions, please contact the board of education.

Parent contribution education

The school asks for a voluntary financial contribution for extra facilities and activities in addition to the curriculum. For the education of IKC De Eglantier, a part of the money is spent on trips, TPO and IPC activities.

The parental contribution is also used for:

- Annually/bi-annually, all children go on an educational outing by coach;
- Food and drinks and renting the sports field for the sports day;
- The rent of the school gardens for group 6;
- The decoration of parties such as the Sinterklaas celebration and Christmas party;
- The compensation for the photographer who photographs and films the children during various activities;
- Educational trips.

If parents cannot pay the voluntary contribution, they can apply for the Delft Pass. When parents are unwilling or unable to pay the voluntary contributions, children may still participate in activities.

For all groups the parent contribution is € 66 per year. You can pay via Stichting ouderraad De Eglantier, NL65 INGB 0001673458.

Childcare costs

Childcare (daycare, toddler care and pre-school and after-school care) falls under the Childcare Act. As a parent, you enter into a contract with Kinderopvang Morgen for childcare. Working parents are often entitled to childcare allowance and pay an income-related parent's contribution. The rates can be found on the website: www.eglantierdelft.nl/ouders/ouderbijdrage



IB-BUILDING
T 015 256 42 08
RH-BUILDING
T 015 256 42 08

LUNCH BREAK
T 015 256 42 08

BSO IB
T 06 294 09 623

PLAYGROUP
T 06 153 51 196

VSO / BSO RH
T 06 153 51 196

DAYCARE CENTRE
T 06 580 23 065

NOVEMBER 2024



Monday NOTES	Tuesday NOTES	Wednesday NOTES	Thursday NOTES	Friday 1	weekend 2
				Autumn break Childcare centre OPEN	3
44					
4	5	6	7	8	9
IPC EY Time for a party IPC MP1 Communication and magical media IPC MP2 Living together IPC MP3 Weather and climate	20.00 OR meeting	Head Lice check 08.30-09.30 Coffee morning IB		Newsletter 4 School photographer	10
				Start media literacy week	
45					
11	12	13	14	15	16
Group 3 through 8 Open PE class Groep 5 through 8 Draw lots Childcare Sinterklaas	Group 3 through 8 Open PE class 19.30 - 21.30 MR meeting	19.30 Parents' evening Media literacy			Sinterklaas in Nederland
Start Sinterklaas news bulletin					17
46					
18	19	20	21	22	23
OC meeting		Study day Childcare centre OPEN			Sinterklaas in Delft
					24
47					
25	26	27	28	29	30
IPC MP1 Festive season Sint and Christmas		MP3 School play Third JMR meeting		Newsletter 5	
48					

SCHOOLTIME EDUCATION

Monday, Tuesday,
Thursday, Friday

8.30 - 12.00
13.00 - 15.00

Wednesday

8.30 - 12.00

OPENING HOURS

DAYCARE CENTRE

daily

7.30 - 18.30

PLAYGROUP

Monday, Tuesday,
Thursday, Friday

8.15 - 12.15

PRE-SCHOOL CARE (VSO)

Monday, Tuesday,
Thursday, Friday

7.30 - 8.30

AFTER-SCHOOL CARE (BSO)

Monday, Tuesday,
Thursday, Friday

15.00 - 18.30

Wednesday

12.00 - 18.30

holidays and
schoolfree days:

7.30 - 18.30

Delftpas

The Delftpas can be applied for by everyone, even if you do not live in Delft. Delftpas is valid from 1 March 2024 through 28 February 2025. With the Delftpas, you can experience fun activities in Delft and the region, go to the movies or a museum for free. If you have a low income, you can also get a subsidy for school materials and parental contribution with the Delftpas. Go to www.delft.nl/delftpas.

Low-income parents can also use the Delftpas to pay (part of) the costs of sports and culture. The Jeugdportsfonds (€ 325) and the Jeugdcultuurfonds (€ 450) provide a contribution to the costs of sport and culture. You can apply for this contribution separately or both through the school management.

For more information, please visit:
www.jeugdportsfonds.nl or www.jeugdculuurfonds.nl.

IKC Practical information from A to Z

Bicycles

Grades 5 and up regularly go on the road with their bicycles under the supervision of the teacher and parent(s), for example, for an outing, school garden or traffic lessons.

The bicycle must, of course, be technically sound. Cycling is not allowed on the playground. At the beginning of the school year, the classes discuss which children may or may not come to school by bicycle daily. There is only limited space for the IKC to store bicycles. That is why only children who live more than fifteen

minutes' walk from school can come by bike or when a trip by bike is planned.

If your child does come to school by bicycle, we ask you to put it in the appropriate racks. Make sure that the bike is locked. The IKC is not liable for damage or theft.

Communication

Letters, newsletters, films or photo albums from our in-house photographer of activities are sent digitally as much as possible via our communication apps. For the



IB-BUILDING

T 015 256 42 08

RH-BUILDING

T 015 256 42 08

LUNCH BREAK

T 015 256 42 08

BSO IB

T 06 294 09 623

PLAYGROUP

T 06 153 51 196

VSO / BSO RH

T 06 153 51 196

DAYCARE CENTRE

T 06 580 23 065

DECEMBER 2024



Monday NOTES	Tuesday NOTES	Wednesday NOTES	Thursday NOTES	Friday NOTES	weekend	
					1	
48	2 Gr 5 through gr 8 St Nicholas surprises handed in	3 Gr 5 through gr 8 St Nicholas surprises presentation	4	5 St Nicholas party Half day Childcare centre OPEN	6	7 8
49	9 Childcare Christmas	10	11 Fourth JMR meeting	12	13 Newsletter 6	14 15
50	16 17.00 - 19.00 Christmas activity Pupils afternoons off Childcare centre OPEN	17	18	19	20 Half day Childcare centre OPEN	21 22
51	23 Christmas break Childcare centre OPEN	24 Christmas day Christmas break Childcare centre CLOSED	25 Boxing day Christmas break Childcare centre CLOSED	26 Christmas break Childcare centre OPEN	27 Christmas break Childcare centre OPEN	28 29
52						

SCHOOLTIME EDUCATION

Monday, Tuesday,
Thursday, Friday

8.30 - 12.00
13.00 - 15.00

Wednesday
8.30 - 12.00

OPENING HOURS

DAYCARE CENTRE

daily
7.30 - 18.30

PLAYGROUP

Monday, Tuesday,
Thursday, Friday
8.15 - 12.15

PRE-SCHOOL CARE (VSO)

Monday, Tuesday,
Thursday, Friday
7.30 - 8.30

AFTER-SCHOOL CARE (BSO)

Monday, Tuesday,
Thursday, Friday
15.00 - 18.30
Wednesday
12.00 - 18.30

holidays and
schoolfree days:
7.30 - 18.30

school we use Social School and for the child care we use the Konnect app. It is, therefore, important that the IKC is aware of your most recent details. Changes to your information can be sent to:
admin@eglantierdelft.nl and/or plaatsingen@kinderopvangmorgen.nl

Drop off and pick up (school run)

The safety of the children is paramount. That is why we ask you to bring your child by car only in emergencies. If this is not possible, we request that you park your car in the designated parking spaces in such a way that the other traffic is not obstructed and the safety is not endangered. The police are notified of violations of the parking bans. The IKC regularly ask the police to supervise.

For the safety of the children, there is a drive-in ban at the Ina Boudier-Bakkerstraat between 8.15-8.45 and 14.45-15.15. At the Roland Holstlaan, we ask you not to stop in front of the R.H. building. There are enough parking spaces on the Roland Holstlaan and the Jan Campertlaan.

Educational trips

We try to make an educational trip with most IPC themes. This is made known to parent (s) in advance via the communication app.

In the school year 2024-2025, we organise a trip by coach for all the groups. In addition, we regularly call in the help of parents for trips. Parents who transport children by car must have passenger insurance and seat belts, also in the rear. Children up to 1.35 m should preferably be transported in an approved child seat. The law makes exceptions for occasional transport by others other than the parents. However, children up to 1.35 m must not be transported in the front seat without an approved child seat. We thereby adhere to the guidelines for safe transportation. In transport by other parents, we ask you to give your child a car seat or booster seat (if present) for use during transport during the trip. Many trips can only take place with the help of parent(s). Please try to free up time for this. The childcare has a protocol for outings. You can ask the pedagogical staff what that entails.

First aid

Should your child be involved in an accident at school, then the procedure is as follows:

- 1 Minor injuries are treated by one of the teachers or pedagogical staff. Several teachers have a first-aid certificate (BHV) and will assist if necessary;
- 2 The school will give first aid in case of severe injuries and will immediately phone the parents;
- 3 If you are available, you can take your child to the Emergency Department;



IB-BUILDING
T 015 256 42 08
RH-BUILDING
T 015 256 42 08

LUNCH BREAK
T 015 256 42 08

BSO IB
T 06 294 09 623

PLAYGROUP
T 06 153 51 196

VSO / BSO RH
T 06 153 51 196

DAYCARE CENTRE
T 06 580 23 065

JANUARY 2025



Monday	Tuesday	Wednesday	Thursday	Friday	weekend
NOTES	NOTES	1	2	3	4
Christmas break Childcare centre OPEN	New Year's Eve Christmas break Childcare centre OPEN	New Year's Day Christmas break Childcare centre CLOSED	Christmas break Childcare centre OPEN	Christmas break Childcare centre OPEN	
01					5
6	7	8	9	10	11
IPC EY Tracking and collecting IPC MP1 Transport IPC MP2 Inventors and machines IPC MP3 How they see the world Childcare Do a book		Head Lice check			
02					12
13	14	15	16	17	18
Cito test week 1	20.00 OR meeting	09.30 - 11.00 Open Morning IKC		Newsletter 7	
03					19
20	21	22	23	24	25
Cito test week 2 Childcare Household adventures	19.30 - 21.30 MR meeting	08.30-09.30 Coffee morning IB			
04					26
27	28	29	30	31	
Group 8 Secondary school information evening	Group 8 Secondary school information evening	Study day Childcare centre CLOSED			
05			Start of Poetry Week	Day of the principal	

SCHOOLTIME EDUCATION

Monday, Tuesday,
Thursday, Friday

8.30 - 12.00
13.00 - 15.00

Wednesday
8.30 - 12.00

OPENING HOURS

DAYCARE CENTRE
daily

7.30 - 18.30

PLAYGROUP

Monday, Tuesday,
Thursday, Friday

8.15 - 12.15

PRE-SCHOOL CARE (VSO)

Monday, Tuesday,
Thursday, Friday

7.30 - 8.30

AFTER-SCHOOL CARE (BSO)

Monday, Tuesday,
Thursday, Friday

15.00 - 18.30

Wednesday
12.00 - 18.30

holidays and
schoolfree days:

7.30 - 18.30

4 If you are not available, we will contact the G.P.

surgery;

5 In severe cases, we immediately call the emergency services and parents;

6 We register all accidents.

Healthy eating | timebreak | treats

At IKC, we encourage healthy eating. During the break (around 10 o'clock), we aim to ensure that children eat and drink healthily. We have 'Gruit'-days at school five days a week. This means that only fruit and vegetables are eaten during the small break.

At lunchtime (around 12 noon), children enjoy a packed lunch. We aim for all children to bring a healthy lunch from home. We would like parents to ensure that the food they bring is healthy and nutritious. Consider fresh fruit, wholemeal bread, wraps, noodles and foods low in sugars. Good nutrients are desirable.

We naturally celebrate your child's birthday at De Eglantier. We encourage healthy treats. Of course, your child will be given the opportunity to treat in your child's group. A small amount is desirable and we are very much in favour of a healthy treat for the children and the teacher/pupil.

Tip: please also ask the teacher if there are children with special diets or allergies (cow's milk, colourings, etc.)

Our childcare centre also pays a lot of attention to healthy food. This is reflected in the meals and snacks we offer during the day. We strive to offer a varied and nutritious menu in line with healthy eating guidelines.

Head lice

Unfortunately, children sometimes have head lice. We request you inform the IKC when your child has head lice. We can then notify the other parents. After each holiday, parents are asked per group to check all children for head lice. If head lice are found during your child's check, you will be approached by the teacher or pedagogical staff member. You must then treat your child at home (regular combing for at least two weeks).

Homework

Grade 5 and up receive weekly homework. The homework consists of preparing for spelling tests, presentations or a book review and making assignments. From grade 6, children have a homework folder to take home and return homework to school.

The teacher will ascribe at least one test per week to



IB-BUILDING
T 015 256 42 08
RH-BUILDING
T 015 256 42 08

LUNCH BREAK
T 015 256 42 08

BSO IB
T 06 294 09 623

PLAYGROUP
T 06 153 51 196

VSO / BSO RH
T 06 153 51 196

DAYCARE CENTRE
T 06 580 23 065

FEBRUARY 2025



Monday NOTES	Tuesday NOTES	Wednesday NOTES	Thursday NOTES	Friday NOTES	weekend 1	
					2	
05	3 OC meeting	4 Group 8 Attainment test	5 Fifth JMR meeting	6	7 Newsletter 8	8
						9
06	10	11	12 EY Schoolplay	13 First report card	14	15
						16
07	17 15.00 - 17.00 Group A through 7 Parent teacher meeting	18 15.00 - 21.00 Group A through 7 Parent teacher meeting 20.00 OR meeting	19 13.00 - 17.00 Group A through 7 Parent teacher meeting Trefball tournament	20 15.00 - 17.00 Group A through 7 Parent teacher meeting	21	22
					Half day Childcare centre OPEN	23
08	24 Spring break Childcare centre OPEN	25 Spring break Childcare centre OPEN	26 Spring break Childcare centre OPEN	27 Spring break Childcare centre OPEN	28 Spring break Childcare centre OPEN	
09						

SCHOOLTIME EDUCATION

Monday, Tuesday,
Thursday, Friday

8.30 - 12.00
13.00 - 15.00

Wednesday

8.30 - 12.00

OPENING HOURS

DAYCARE CENTRE

daily

7.30 - 18.30

PLAYGROUP

Monday, Tuesday,
Thursday, Friday

8.15 - 12.15

PRE-SCHOOL CARE (VSO)

Monday, Tuesday,
Thursday, Friday

7.30 - 8.30

AFTER-SCHOOL CARE (BSO)

Monday, Tuesday,
Thursday, Friday

15.00 - 18.30

Wednesday

12.00 - 18.30

holidays and
schoolfree days:

7.30 - 18.30

the children. In groups 7 and 8, the children have a planner to write down the tests and homework to plan. When your child uses after-school care, homework support is possible.

IKC guide

The IKC has published an IKC guide (part A), in which you can read about the goals we pursue and how we intend to achieve them. The school guide is provided digitally to the parents.

You can find any updated versions on the website.

This calendar (part B) is updated annually and handed out to all parents of the IKC at the start of the school year.

Insurance

IKC De Eglantier has taken out collective accident insurance for all children, employees, volunteers, and helping parents. This insurance is valid during IKC times and for all activities organised by the school, such as workweek and trips. This insurance does not apply to damaged personal property, such as bicycles, clothing and glasses. For this, you must take out a W.A. insurance yourself.

Lost and Found objects

Lost and found items are collected in special baskets at every location. We advise you not to let your child bring any valuables to school. Found objects that are not collected will be displayed in the hall for at least a week before a holiday. If the owner has not yet claimed them, we will donate them to a good cause, or they will be thrown away.

Lunch break care

Most children eat lunch at school in the afternoon. During lunch hour, the children can have lunch and play between noon and 1 p.m. under the supervision of assistants. The school provides the organisation of the lunch break care. You pay by direct debit.

For the incidental lunch care, these rates apply: € 3 per time/per child and € 1,60 with a subscription per year/per day/per child. The costs of incidental lunch care costs are settled twice a year, in January and in September.

You can register and deregister for incidental lunch care by telephone between 8.00 a.m. and 11.00 a.m. with the TSO coordinator, or by sending an e-mail before 11.00 a.m. to: tso@eglantierdelft.nl

If you are interested in the role of lunch care assistant, you can register with the TSO coordinator.



IB-BUILDING
T 015 256 42 08
RH-BUILDING
T 015 256 42 08

LUNCH BREAK
T 015 256 42 08

BSO IB
T 06 294 09 623

PLAYGROUP
T 06 153 51 196

VSO / BSO RH
T 06 153 51 196

DAYCARE CENTRE
T 06 580 23 065

MARCH 2025



Monday NOTES	Tuesday NOTES	Wednesday NOTES	Thursday NOTES	Friday NOTES	weekend 1	
					2	
09	3 IPC EY Animal mess IPC MP1 Day & night IPC MP2 Save the world IPC MP3 Holland waterland Childcare Animals	4 Building RH Evacuation exercise	5 Head Lice check	6	7 Building IB Evacuation exercise Newsletter 9	8
					9	
10	10	11 12.00 - 13.00 TSO RH Evacuation exercise 19.30 - 21.00 MR meeting	12 08.30-09.30 Coffee morning RH919 Sixth JMR meeting	13 12.00 - 13.00 TSO IB Evacuation exercise	14	15
					16	
11	17 Groep 3 through 8 Open PE class	18 Groep 3 through 8 Open PE class 20.00 OR meeting	19 9.30 - 11.00 Open morning IKC	20 gr 3 through 8 Kangaroo competition	21	22
	Week Public Education					23
12	24 Group 6 Practice biking to the school garden	25 Group 8 Theory traffic exam International celebration Holi Phagwa	26 MP1 School play	27	28 Newsletter 10	29
						30 Summer time
13						

SCHOOLTIME EDUCATION

Monday, Tuesday,
Thursday, Friday

8.30 - 12.00
13.00 - 15.00

Wednesday

8.30 - 12.00

OPENING HOURS

DAYCARE CENTRE

daily

7.30 - 18.30

PLAYGROUP

Monday, Tuesday,
Thursday, Friday

8.15 - 12.15

PRE-SCHOOL CARE (VSO)

Monday, Tuesday,
Thursday, Friday

7.30 - 8.30

AFTER-SCHOOL CARE (BSO)

Monday, Tuesday,
Thursday, Friday

15.00 - 18.30

Wednesday

12.00 - 18.30

holidays and
schoolfree days:

7.30 - 18.30

Mobile phone/smartwatch

In the IKC, the use of mobile phones is prohibited. If there are calamities or urgent messages for your child, you may call the IKC phone number. We can imagine that you like to give your child a mobile to take to school. When children bring a mobile phone, they must remain switched off and in their school bag during school hours. We are also seeing more and more children with smartwatches. A smartwatch is an Internet-enabled watch that allows you not only to see the time but also to make calls and sometimes photos or videos. In the classroom, we see that children are distracted by it. Consequently, children keep their smartwatch in their bags during school hours. To avoid losing or damaging the smartwatch, we advise you not to let your child wear a smartwatch to school. The school is not liable for loss, theft of or damage to the mobile phone or the smartwatch. The IKC and all its parts is not liable in case of loss, theft of or damage to the mobile phone or the smartwatch.

Physical education

Grades 1 and 2 have physical exercise or dance in the playroom. They exercise in their underwear with sneakers.

Groups 3 to 8 receive physical education twice a

week from a professional teacher. Sneakers, a gym suit or shorts with a shirt are required. For safety reasons, the children wear no jewellery, and long hair needs to be worn in a tail or braid.

If your child cannot participate in the gym class, you must notify the teacher via the communication app. The groups that have gymnastics at 8.30 a.m. and 1 p.m. are expected at the gym room on that morning or afternoon; they do not go to school first. Children who use pre-school care are brought to the gym room. The door opens at 8.20 a.m. and 12.50 p.m. The kids must be ready to start the lesson at 8.30 and 13.00. The children who finish gym class at noon and 3 p.m. can be picked up in the gym room.

Parents with a low income can also use the Delftpas to pay (part of) the costs of sports and culture. The Jeugd sportfonds (€ 325) and the Jeugd cultuurfonds (€ 450) contribute to the costs of sport and culture. You can apply for this contribution separately or both through the school management.

For more information: www.jeugdsportfonds.nl or www.jeugd cultuurfonds.nl.

Play area

During the lunch break (12.00 to 13.00), the square is



IB-BUILDING
T 015 256 42 08
RH-BUILDING
T 015 256 42 08

LUNCH BREAK
T 015 256 42 08

BSO IB
T 06 294 09 623
PLAYGROUP
T 06 153 51 196

VSO / BSO RH
T 06 153 51 196
DAYCARE CENTRE
T 06 580 23 065

APRIL 2025



Monday	Tuesday	Wednesday	Thursday	Friday	weekend
31	1	2	3	4	5
		Study day Childcare centre OPEN			6
14	7	8	9	10	11
Childcare Easter OC meeting		Group 2, 4, 6 and 8 Start school garden	Group 8 Anglia test		12
					13
15	14	15	16	17	18
	19.30 MR meeting	Group 1 through 8 Portfolio talks	Group 1 through 8 Portfolio talks Newsletter 11	Good Friday Childcare centre OPEN	19
					20 Easter Sunday
16	21	22	23	24	25
Easter Monday Childcare centre CLOSED	May break Childcare centre OPEN Childcare Sowing and potting	May break Childcare centre OPEN	May break Childcare centre OPEN	May break Childcare centre OPEN	26
					27 Kingsday
17	28	29	30	NOTES	NOTES
May break Childcare centre OPEN	May break Childcare centre OPEN	May break Childcare centre OPEN			
18					

SCHOOLTIME EDUCATION

Monday, Tuesday,
Thursday, Friday

8.30 - 12.00
13.00 - 15.00

Wednesday

8.30 - 12.00

OPENING HOURS

DAYCARE CENTRE

daily

7.30 - 18.30

PLAYGROUP

Monday, Tuesday,
Thursday, Friday

8.15 - 12.15

PRE-SCHOOL CARE (VSO)

Monday, Tuesday,
Thursday, Friday

7.30 - 8.30

AFTER-SCHOOL CARE (BSO)

Monday, Tuesday,
Thursday, Friday

15.00 - 18.30

Wednesday

12.00 - 18.30

holidays and
schoolfree days:

7.30 - 18.30

intended for the children who have lunch at school. The other children can enter the square at 12.45 at the I.B. building and 12.55 at the R.H. building. After school, the square is used for after-school care.

At the I.B. building, children who do not use the childcare are also allowed to play on the square. We expect that they will adhere to the school rules. At the R.H. building, the square is also used for childcare after school, and it is not allowed to play freely after school.

Protocol

Protocols have been drawn up within the IKC. This includes a domestic violence protocol, behaviour, cycling, lice, pedagogical plan of approach and mourning. The protocols can be viewed by appointment with the management.

The education inspection report and the GGD report can be found on our websites.

Report cards

The children do not receive a report card in grades 1 and 2. The children are observed during their play based on the "KIJK!" development lines. The development lines are used as a starting point for the annual developmental review between the employee, the parents and the child.

In the school, an introductory meeting takes place

around September. In the introductory interview, we discuss who the child is, the child's interests and talents. In addition, we pay attention to what the child needs this school year to achieve optimal development. Agreements for the future are made with your child. The first report talk will take place in February, and you will receive the second report card in July.

In the childcare, an introductory meeting takes place at the start of childcare. In this meeting, everything concerning the child is discussed, such as home situation, allergies, etc. After 3 months, the parents have a follow-up interview about the child's development. At each birthday, there is a new development discussion.

In February, the development discussion takes place following the first report. In July you will receive the second report.

In addition, you may contact the teacher(s) for information after school. Please make an appointment for this. Teachers may also take the initiative for an interview.

Suspension and expulsion

In consultation with Stichting Librijn, the IKC has drawn up clear rules for suspension and expulsion in the event of unacceptable behaviour of children and parent(s) and the school's inability to deal with certain situations or behaviour. We use a behavioural protocol for this. These



IB-BUILDING

T 015 256 42 08

RH-BUILDING

T 015 256 42 08

LUNCH BREAK

T 015 256 42 08

BSO IB

T 06 294 09 623

PLAYGROUP

T 06 153 51 196

VSO / BSO RH

T 06 153 51 196

DAYCARE CENTRE

T 06 580 23 065

MAY 2025



Monday	Tuesday	Wednesday	Thursday	Friday	weekend
NOTES	NOTES	NOTES	1	2	3
			May break Childcare centre OPEN	May break Childcare centre OPEN	
					4
					Memorial Day
18					
5	6	7	8	9	10
Liberation day Childcare centre CLOSED	Study Day Childcare centre OPEN IPC EY About water IPC MP1 Our world IPC MP2 Explorers and adventurers IPC MP3 (Gr 7) Feelings IPC MP3 (Gr 8) Growing up	Head lice check			
					11
					Moederdag
19					
12	13	14	15	16	17
Childcare Health Adventures	20.00 OR meeting	Sports Day			
					18
20					
19	20	21	22	23	24
		Reserve Sports Day Seventh JMR meeting		Newsletter 12	
					25
Evening 4-day walk	Evening 4-day walk	Evening 4-day walk	Evening 4-day walk	Evening 4-day walk	
21					
26	27	28	29	30	31
		Study day Childcare centre OPEN	Ascension Day Childcare centre CLOSED	Childcare centre OPEN	
22					

SCHOOLTIME EDUCATION

Monday, Tuesday,
Thursday, Friday

8.30 - 12.00
13.00 - 15.00

Wednesday

8.30 - 12.00

OPENING HOURS

DAYCARE CENTRE

daily
7.30 - 18.30

PLAYGROUP

Monday, Tuesday,
Thursday, Friday
8.15 - 12.15

PRE-SCHOOL CARE (VSO)

Monday, Tuesday,
Thursday, Friday
7.30 - 8.30

AFTER-SCHOOL CARE (BSO)

Monday, Tuesday,
Thursday, Friday
15.00 - 18.30

Wednesday
12.00 - 18.30

holidays and
schoolfree days:
7.30 - 18.30

protocols can be found on our website.

By intolerable behaviour, we mean:

- refusing to listen;
- refusing to participate in activities;
- being rude or cheeky; insulting, discriminating, cursing, swearing, threatening;
- fighting, hitting and kicking;
- bullying;
- committing vandalism or theft;
- coming late to school regularly.

By "School's inability to deal with certain situations or behaviour", we mean:

The situation that arises when the school, in general, can no longer provide a responsible, adequate answer to the specific instruction and educational needs of a child.

Suspension means denial of access to the school for a day.

Expulsion means that the child is deregistered from the school. The right to be heard will be applied in all cases. The competent authority will be involved in the procedure. A definitive expulsion can only occur if the school's management has ensured that another school or institution is willing to admit the child, with a maximum period of eight weeks.

This suspension and expulsion policy also applies if a parent shows aggressive and intimidating behaviour towards other parents, teachers, management, other staff, or the children.

In the event of a violation of the law, we, as IKC, will always involve the police.

Toilet trained

We assume that children who go to primary school are toilet trained. It is normal for children of kindergarten age to have an "accident", so provide spare clothing. If your child is not toilet trained for medical reasons, we will try to find a solution together. As a school, we only change children when an "accident" has occurred.

Use of medication

Children are with us for several hours a day. During this time, they may need to take prescribed medication. It can also happen that children experience pain that can seemingly be solved easily by painkillers (brought along) Because medicines can sometimes have unexpected consequences, we handle them with great care. Staff members do not administer (light) medication to children unless parents request this, the staff members have been



IB-BUILDING
T 015 256 42 08
RH-BUILDING
T 015 256 42 08

LUNCH BREAK
T 015 256 42 08

BSO IB
T 06 294 09 623

PLAYGROUP
T 06 153 51 196

VSO / BSO RH
T 06 153 51 196

DAYCARE CENTRE
T 06 580 23 065

JUNE 2025



Monday NOTES	Tuesday NOTES	Wednesday NOTES	Thursday NOTES	Friday NOTES	weekend
					1
22					
2	3	4	5	6	7
IPC MP3 At the funfair	19.30 MR meeting	09.30 - 11.00 Open Morning IKC			
					8
			Day for lunch break care assistants		Pentecost
23					
9	10	11	12	13	14
Whit monday Childcare centre CLOSED	Pentecost break Childcare centre OPEN	Pentecost break Childcare centre OPEN	Pentecost break Childcare centre OPEN	Pentecost break Childcare centre OPEN	
					15
					Fathers day
24					
16	17	18	19	20	21
Cito test week 1	20.00 OR meeting	08.30-09.30 Coffee morning IB Eighth JMR meeting		Newsletter 13	
					22
25					
23	24	25	26	27	28
Cito test week 2 OC meeting					
					29
26					

SCHOOLTIME EDUCATION

Monday, Tuesday,
Thursday, Friday

8.30 - 12.00
13.00 - 15.00

Wednesday

8.30 - 12.00

OPENING HOURS

DAYCARE CENTRE

daily
7.30 - 18.30

PLAYGROUP

Monday, Tuesday,
Thursday, Friday
8.15 - 12.15

PRE-SCHOOL CARE (VSO)

Monday, Tuesday,
Thursday, Friday
7.30 - 8.30

AFTER-SCHOOL CARE (BSO)

Monday, Tuesday,
Thursday, Friday
15.00 - 18.30

Wednesday
12.00 - 18.30

holidays and
schoolfree days:
7.30 - 18.30

instructed, and agreements have been made. IKC staff are not liable for any side effects/consequences that may occur as a result of the medicine/medical action or forgetting to administer the medicine.

Therefore, the teachers and pedagogical staff only give children medicine if there is a signed statement from parents or attending physicians.

Workweek

In group 7, the children go on a two-day trip together. The children spend one night at the scout house. This is in preparation for the workweek in group 8. Children experience what it is like to spend a night away from home with classmates and have to travel a considerable distance by bike.

In group 8, the children go on a workweek for four days. During the information meeting and a special information meeting before this week, you will receive information about the content of the workweek. The costs of these two workweeks are € 150.

The work week takes place at the Natuurvriendenhuis De Bosbeek in Bennekom. The program is varied and is in line with the curriculum from group 8. Trips are made by bike to Hoge Veluwe and the Kröller-Müller Museum, the Airborne Museum and a wildlife safari.



IB-BUILDING
T 015 256 42 08
RH-BUILDING
T 015 256 42 08

LUNCH BREAK
T 015 256 42 08

BSO IB
T 06 294 09 623

PLAYGROUP
T 06 153 51 196

VSO / BSO RH
T 06 153 51 196

DAYCARE CENTRE
T 06 580 23 065

JULY 2025



Monday	Tuesday	Wednesday	Thursday	Friday	weekend
NOTES	1	2	3	4	5
		Group 2 and 4 Parents come see School garden Group 8 Anglia Party			6
27					
7	8	9	10	11	12
		Group 2 and 4 First harvest school garden		Group 8 Farewell evening	13
28					
14	15	16	17	18	19
Group 8 Reserve farewell evening Group 8 Activity	Second Report card 20.00 MR meeting		Newsletter 14	Free day Childcare centre OPEN	20
29					
21	22	23	24	25	26
Summer holidays Childcare centre OPEN	Summer holidays Childcare centre OPEN	Summer holidays Childcare centre OPEN	Summer holidays Childcare centre OPEN	Summer holidays Childcare centre OPEN	27
30					
28	29	30	31		
Summer holidays Childcare centre OPEN	Summer holidays Childcare centre OPEN	Summer holidays Childcare centre OPEN	Summer holidays Childcare centre OPEN	Summer holidays Childcare centre OPEN	
31					

SCHOOLTIME EDUCATION

Monday, Tuesday,
Thursday, Friday

8.30 - 12.00
13.00 - 15.00

Wednesday

8.30 - 12.00

OPENING HOURS

DAYCARE CENTRE

daily

7.30 - 18.30

PLAYGROUP

Monday, Tuesday,
Thursday, Friday

8.15 - 12.15

PRE-SCHOOL CARE (VSO)

Monday, Tuesday,
Thursday, Friday

7.30 - 8.30

AFTER-SCHOOL CARE (BSO)

Monday, Tuesday,
Thursday, Friday

15.00 - 18.30

Wednesday

12.00 - 18.30

holidays and
schoolfree days:

7.30 - 18.30

Useful (e-mail)adressen and phone numbers

Integraal Kindcentrum De Eglantier

Primary school | Daycare

IB-building domain 7-12 years

Ina Boudier-Bakkerstraat 2

2624 NX Delft

T 015 256 42 08 (direct dial 1)

E directie@eglantierdelft.nl

IBAN NL16 RABO 0301 8075 07. Librijn De Eglantier

Lunch Break Care

E tso@eglantierdelft.nl

T 015 256 42 08 (doorkiesnummer 1) E

After-school care IB Domain 7 - 12 years

T 06 294 09 623

E eglantier1@kinderopvangmorgen.nl

Stichting Librijn openbaar onderwijs

Postbus 121

2600 AC Delft

T 015 251 22 80

Visiting address: Building Mercurius

Papsouwselaan 119d

2624 AK Delft

I www.librijn.nl

Primary school | Playgroup | Daycare

RH-building domain 0-7 years

Roland Holstlaan 917-919

2624 KE Delft

T 015 256 42 08 (direct dial 2)

I www.eglantierdelft.nl

Playgroup

T 06 153 51 196

eglantierpeuteropvang@kinderopvangmorgen.nl

Daycare centre

T 06 580 23 065

eglantierkdv@kinderopvangmorgen.nl

Pre-school care/After-school care RH

T 06 153 51 196

E eglantier3@kinderopvangmorgen.nl

Daycare Morgen

Postbus 593

2280 AN Rijswijk

T 070 792 01 00

Visiting address:

Martin Campsplaan 3

2286 SB Rijswijk

E info@kinderopvangmorgen.nl

I www.kinderopvangmorgen.nl



IB-BUILDING

T 015 256 42 08

RH-BUILDING

T 015 256 42 08

LUNCH BREAK

T 015 256 42 08

BSO IB

T 06 294 09 623

PLAYGROUP

T 06 153 51 196

VSO / BSO RH

T 06 153 51 196

DAYCARE CENTRE

T 06 580 23 065

AUGUST 2025



Monday	Tuesday	Wednesday	Thursday	Friday	weekend
				1	2
Summer holidays Childcare centre OPEN	Summer holidays Childcare centre OPEN	Summer holidays Childcare centre OPEN	Summer holidays Childcare centre OPEN	Summer holidays Childcare centre OPEN	
					3
31					
4	5	6	7	8	9
Summer holidays Childcare centre OPEN	Summer holidays Childcare centre OPEN	Summer holidays Childcare centre OPEN	Summer holidays Childcare centre OPEN	Summer holidays Childcare centre OPEN	
					10
32					
11	12	13	14	15	16
Summer holidays Childcare centre OPEN	Summer holidays Childcare centre OPEN	Summer holidays Childcare centre OPEN	Summer holidays Childcare centre OPEN	Summer holidays Childcare centre OPEN	
					17
33					
18	19	20	21	22	23
Summer holidays Childcare centre OPEN	Summer holidays Childcare centre OPEN	Summer holidays Childcare centre OPEN	Summer holidays Childcare centre OPEN	Summer holidays Childcare centre OPEN	
					24
34					
25	26	27	28	29	30
Summer holidays Childcare centre OPEN	Summer holidays Childcare centre OPEN	Summer holidays Childcare centre OPEN	Summer holidays Childcare centre OPEN	Summer holidays Childcare centre OPEN Last day of summer holidays	
					31
35					

SCHOOLTIME EDUCATION

Monday, Tuesday,
Thursday, Friday

8.30 - 12.00
13.00 - 15.00

Wednesday

8.30 - 12.00

OPENING HOURS

DAYCARE CENTRE

daily

7.30 - 18.30

PLAYGROUP

Monday, Tuesday,
Thursday, Friday

8.15 - 12.15

PRE-SCHOOL CARE (VSO)

Monday, Tuesday,
Thursday, Friday

7.30 - 8.30

AFTER-SCHOOL CARE (BSO)

Monday, Tuesday,
Thursday, Friday

15.00 - 18.30

Wednesday

12.00 - 18.30

holidays and
schoolfree days:

7.30 - 18.30

continued useful (e-mail) addresses and phone numbers

Vertrouwenspersoon Librijn

Mevr. Cissy van Eede (via onderwijsadvies Gouda)

T 079 - 3295607

E c.vaneede@onderwijsadvies.nl

Landelijke Klachtencommissie (LKC)

Postbus 85191

3508 AD Utrecht

Visiting address: Building Woudstede

Zwarte Woud 2

Utrecht

E info@onderwijsgeschillen.nl

I www.onderwijsgeschillen.nl

T 030 280 95 90

Vereniging Openbaar Onderwijs

Beleidsadviseur medezeggenschap en openbaar onderwijs

T 036 533 15 00 (voor dringende zaken buiten kantoortijden: 06 472 52 765)

E info@voo.nl

I www.voo.nl

Vertrouwenspersoon kinderopvang Morgen

Mevr. Judith v.d. Kraan

T 070 792 01 14

E jvanderKraan@kinderopvangmorgen.nl



IB-BUILDING

T 015 256 42 08

RH-BUILDING

T 015 256 42 08

LUNCH BREAK

T 015 256 42 08

BSO IB

T 06 294 09 623

PLAYGROUP

T 06 153 51 196

VSO / BSO RH

T 06 153 51 196

DAYCARE CENTRE

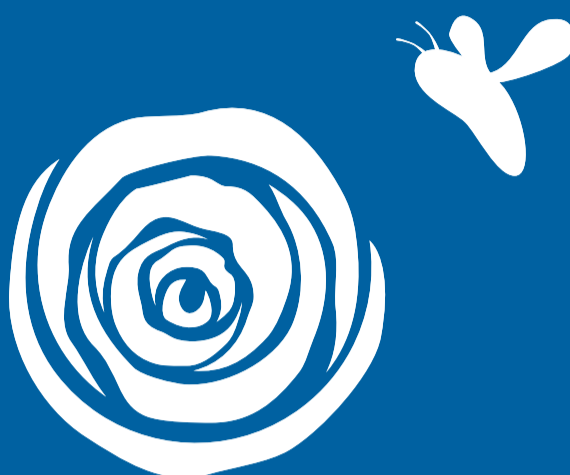
T 06 580 23 065

IKC De Eglantier Voorhof

IB-Gebouw
Ina Boudier-Bakkerstraat 2
2624 NX Delft
(015) 256 42 08

RH-Gebouw
Roland Holstlaan 917 - 919
2624 KE Delft
(015) 256 42 08

directie@eglantierdelft.nl
www.eglantierdelft.nl
Librijn - De Eglantier
NL16 RABO 0301 8075 07



SCHOOLACTIVITIES 2024 - 2025